

DO YOU WANT TO GET IN TOUCH WITH US?

info@futural-project.eu

FOLLOW US!



FUTURAL
futural-project.eu



Co-funded by
the European Union



Rural areas in Europe face some common societal and environmental challenges:



Depopulation



Ageing Population



Brain-Drain



Environmental Conditions



Limited Connectivity
and Access to Public
Infrastructures and
Services

FUTURAL aims to address these challenges and empower the future of rural areas by supporting them to become more resilient and sustainable, better connected and capable of improving their citizens' well-being.

TRENDS & FACTS

- Rural areas cover more than 80% of total EU territory and are home to 30% of the EU population.
- The population in rural areas is already older, on average, than the population in towns, suburbs and cities.
- Young women are more likely to leave rural regions than young men.
- One third of the population of rural regions, lives in a border region.

PROJECT COORDINATOR



ΓΕΩΠΟΝΙΚΟ ΠΑΝΕΠΙΣΤΗΜΙΟ ΑΘΗΝΩΝ
AGRICULTURAL UNIVERSITY OF ATHENS

PARTNERS



Co-funded by
the European Union

FUTURAL

EMPOWERING
the **FUTURE**
of **RURAL AREAS**

WHY FUTURAL?

FUTURAL's vision is to enhance the future of rural communities by delivering a set of digital Smart Solutions (SS) to address key societal, environmental and financial challenges.

KEY RESULTS AND ACTIVITIES



Co-creation of innovations for smart rural areas

Capacity building activities to enable stakeholders to capitalize upon the potential of innovations.

FUTURAL Smart Solutions

8 digital Smart Solutions developed under 5 Smart Solution domains.

FUTURAL Metasearch Platform

A One-stop-shop platform for digital SS, incorporating: 1) SS introduced in FUTURAL, 2) SS developed through OC and, 3) existing SS accessible from other projects.

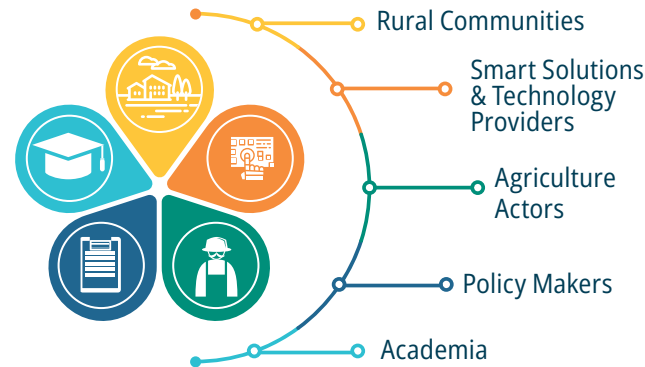
Networking and synergies

Establish EU-RIF, an event to promote networking and synergies between key actors in the rural ecosystem. Links made to CAP networks, Smart Villages and other projects.

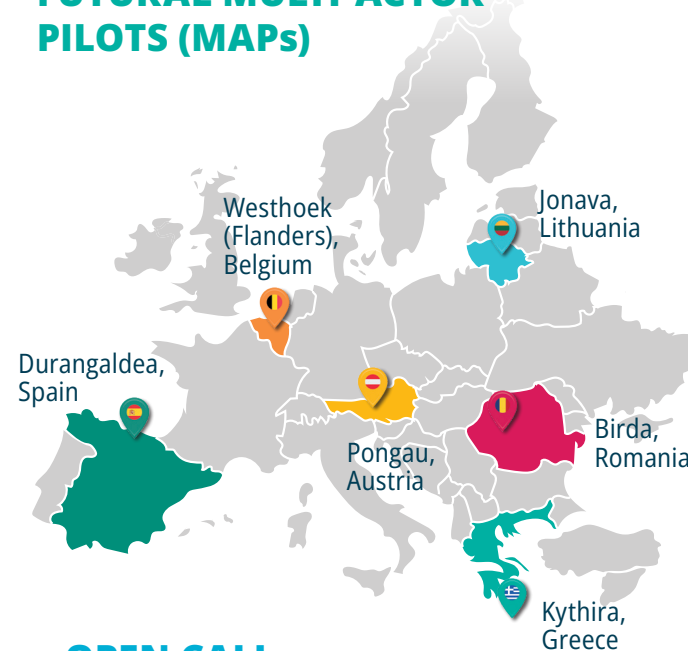
Scale up

Create business models, policy recommendations and governance frameworks.

WHO WILL BENEFIT?



FUTURAL MULTI-ACTOR PILOTS (MAPs)



OPEN CALL

Financial Support to Third Parties: Encourage SMEs and other interested parties (e.g., start-ups, research organisations and rural communities) to develop and apply their own Smart Solutions within the 5 FUTURAL domains, therefore increasing the number of Smart Solutions available to rural communities.

SMART SOLUTIONS IN MAPs

Circular Bioeconomy, Biodiversity and Ecosystem Management

Pongau, Austria | Jonava, Lithuania

- An online circular bioeconomy platform to support the exchange and upcycling of food leftovers from tourism.
- A digital biodiversity status assessment tool (a mobile application supporting visualisation and user feedback).

Climate Adaptation and Mitigation

Westhoek (Flanders), Belgium | Birda, Romania

- An online platform to deliver hydrological models for water monitoring and promoting the implementation and testing of localised Natural-Based Solutions (NBS) strategies.

Resilience to Shocks

Durangaldea, Spain | Kythira, Greece | Pongau, Austria

- An online crowdsensing platform to monitor, assess, and visualise the structural health of bridges, road networks, and buildings, with an early warning system for exceeded health values. It will also map old rural buildings that are in danger or underutilised, identifying alternative uses tailored to rural needs.

Citizen Engagement and Quality of Life

Westhoek (Flanders), Belgium | Durangaldea, Spain | Jonava, Lithuania | Kythira, Greece

- An online platform to engage rural citizens in eGovernment plans and policy co-creation.
- An online platform for policy makers, stakeholders and agencies to evaluate a rural area's accessibility to infrastructural, health, and social services.
- An online platform to allow crowdsourcing reports from residents and visitors to simplify clearance and management of hiking trails.

Lifelong Education and Training

Birda, Romania | Kythira, Greece

- An online platform delivering open courses tailored to the needs of rural communities.