



Co-funded by
the European Union



FUTURAL

European Rural Innovation Forum

Day 1 (5 May 2026)

Hosted by **JO
N
VA**

futural-project.eu



FUTURAL

EU Rural Innovation Forum: objectives

Ari Lomis, Agricultural University of Athens, FUTURAL Coordinator



Co-funded by
the European Union



FUTURAL

Empowering the **FUTure** through innovative Smart Solutions for **rURAL** areas



futural-project.eu

Funded by the European Union. Views and opinions expressed are however those of the author(s) only and do not necessarily reflect those of the European Union or European Research Executive Agency. Neither the European Union nor the granting authority can be held responsible for them.

FUTURAL

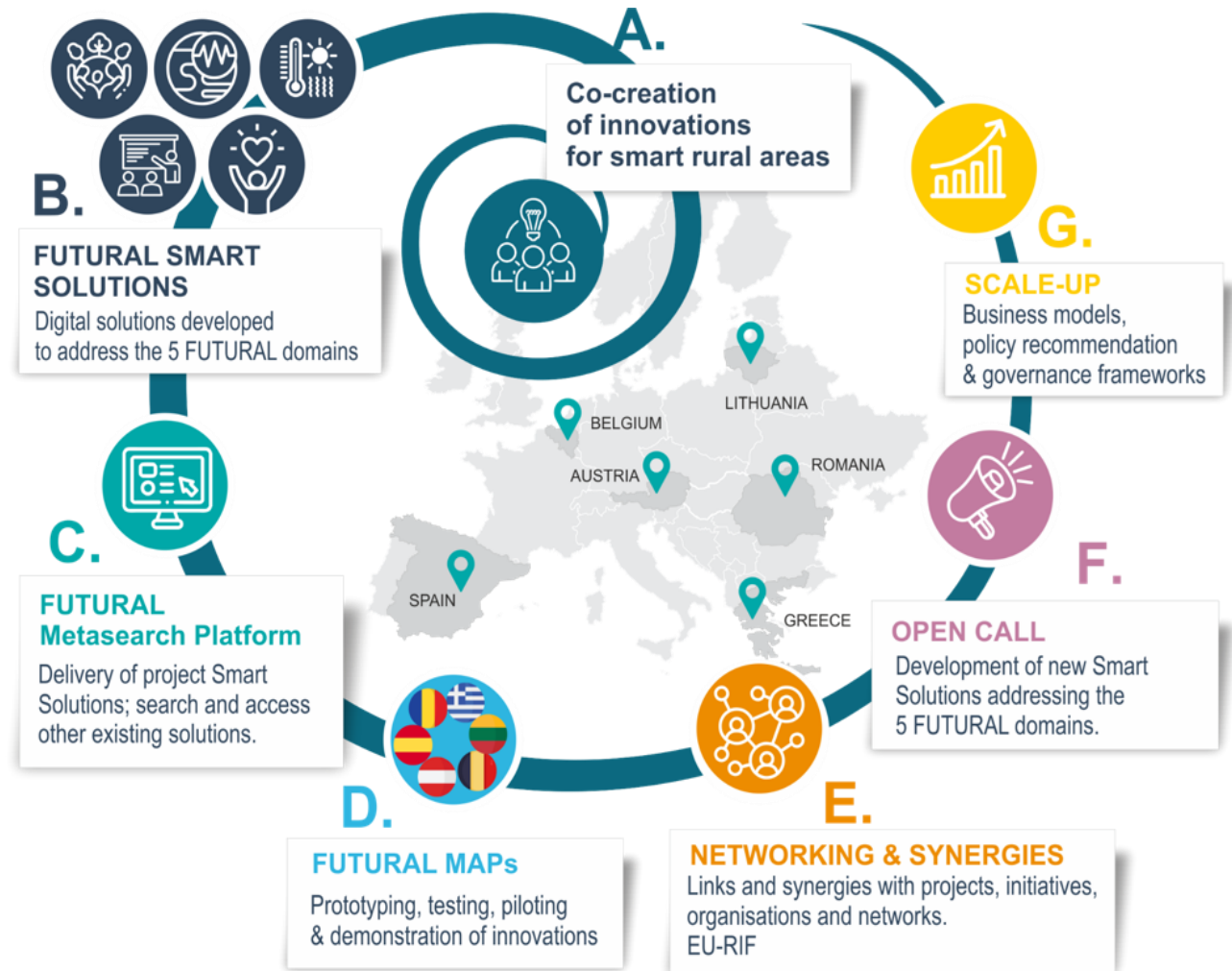
21 partners; 10 EU countries

- Prototype, test, pilot, and demonstrate community-led, **social, technological and business innovations**
- Deliver a set of **digital Smart Solutions** to address key **societal, environmental and financial challenges**



What are we doing?

- Prototype, test, pilot, and demonstrate community-led innovations in **6 Multi-Actor Pilots** across the EU.
- **8 digital Smart Solutions (SS)** under **5 SS domains** to address societal and environmental challenges in rural communities.
- SS will be accessible through an integrated **Metasearch Platform**.
- Establish **EU-RIF** an event to promote networking and synergies between key actors in the rural ecosystem.
- An **Open Call** has funded 10 additional projects to develop their own digital SS.
- **Business Models, Governance Frameworks** and **Policy Recommendations**.



EU-RIF Objectives

- **Promote networking and synergies** between key actors in the rural ecosystem.
- **Create a collaborative space** for community-led innovators, researchers, policymakers, and practitioners.
- **Strengthen rural innovation ecosystems** by facilitating dialogue, learning, and co-creation.
- **Support the adoption and scaling** of Smart Solutions in diverse rural contexts.
- **Connect local experiences to EU policy**, ensuring rural voices shape future strategies and funding frameworks.





FUTURAL

Welcome

Guoda Burokienė, *Vice-Minister of the Economy and Innovation of the Republic of Lithuania*

Povilas Beišys, *Jonava District Municipality Vice Mayor*



Guoda Burokienė

*Vice-Minister of the Economy and Innovation of
the Republic of Lithuania*



Povilas Beišys

Jonava District Municipality Vice Mayor



FUTURAL

Purpose of the day

Ari Lomis, Agricultural University of Athens, FUTURAL Coordinator

Purpose of the day

- **Explore local innovation** across FUTURAL pilot regions.
- **Showcase Smart Solutions** developed in FUTURAL.
- **Demonstrate the Metasearch Platform** for accessing and connecting solutions.
- **Strengthen capacities** for smart rural communities.
- **Foster collaboration and dialogue** among rural actors, experts, and policymakers.

Agenda for the day

Time	Session	
11.20 am	FUTURAL Smart Solutions “flash” presentation	<i>Online platform delivering open courses, Zoe Johns, Agricultural University of Athens</i>
		<i>Citizen engagement platform + Hiking trail maintenance Platform, Annalisa Addis, Lisbon Council</i>
11.30 am	Understanding Smart Villages: From concept to practice	What Smart Villages are, why they matter, and how local authorities can implement them
1.00 pm	Lunch Break	
2.15 pm	What does it mean to be “smart”? Co-creation experiences, innovations and challenges from rural communities	Workshop Carlo Giusa and Brigida Marovelli, UNIPI
4.15 pm	FUTURAL Smart Solutions “flash” presentation	<i>Online circular bioeconomy platform, Panos Petridis, Alchemia</i>
		<i>Digital assessment tool: “Biodiversity Score” and Wildlife monitoring tool, Sonata Adomaviciute-Grabusove, Betavia</i>
		<i>Online crowdsensing platform for infrastructure health monitoring, Ivan Arakistain, TECNALIA</i>
4.30 pm	Tea & Coffee Break	
5.00 pm	Tools for Smart Villages and other rural innovators	<i>FUTURAL Metasearch platform and other smart tools</i>
5.40 pm	FUTURAL Smart solutions “flash” presentation	<i>Accessibility analysis platform and Quality of life desktop application, Manuel Koberl, DLR</i>
		<i>Online platform for delivery of hydrological models, Cristiane Fragata Dos Santos, IHE Delft</i>
5.50 pm	Wrap-up & closing	
6:30 pm	(Optional) networking dinner 📍 Arma Restaurant	À la carte dinner at participants' own expense



FUTURAL

Smart solutions “flash” presentations

Zoe Johns, *Agricultural University of Athens*
Annalisa Addis, *Lisbon Council*



Co-funded by
the European Union



FUTURAL

Online platform delivering open courses

Zoe Johns, Agricultural University of Athens

Hosted by **JO
NVA**

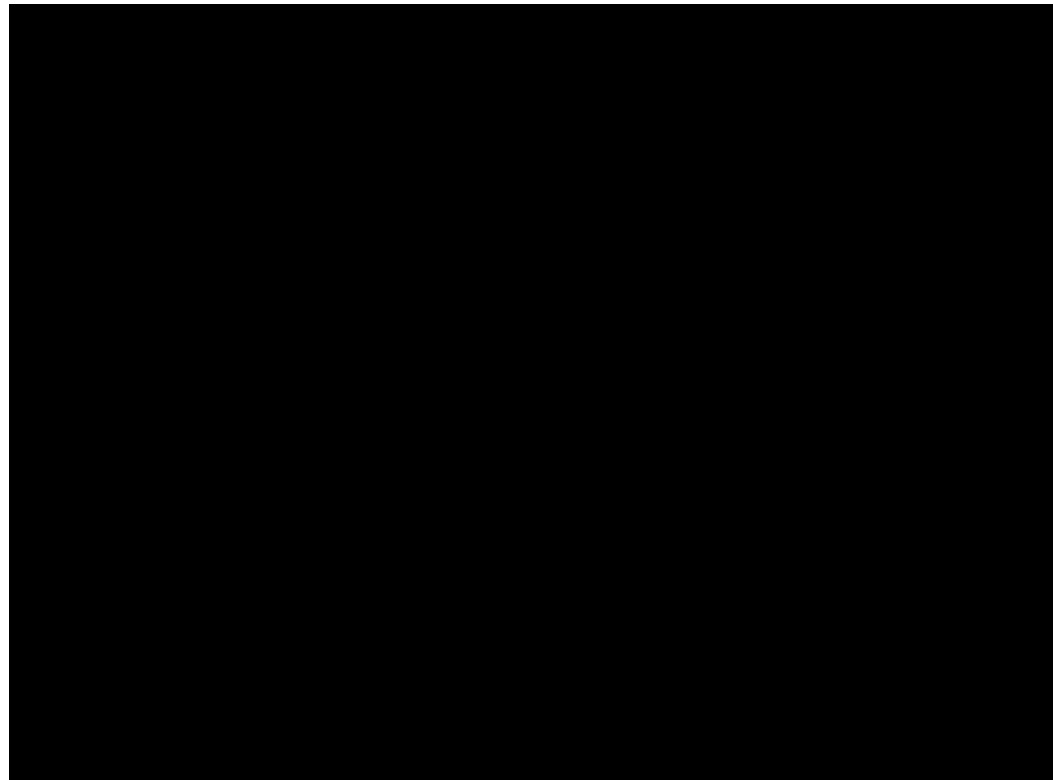
futural-project.eu

Lifelong Learning & Education

Problem addressed	Solution	Target Users	Impact
Rural communities face limited access to relevant, locally tailored education and training opportunities.	FUTURAL LMS platform (via EdX) offering open courses, videos, quizzes, downloadable material, and child-oriented educational resources.	Farmers, youth, local community members, advisors, and primary school children.	Provide rural communities with access to online learning materials on precision agriculture, water management, herb farming, beekeeping, and olive cultivation.

Guided demo

A short guided demo or pre-recorded clip link 





Co-funded by
the European Union



FUTURAL

Man Rūpi Citizen engagement platform + FixMy Kythera Trails Hiking trail maintenance platform

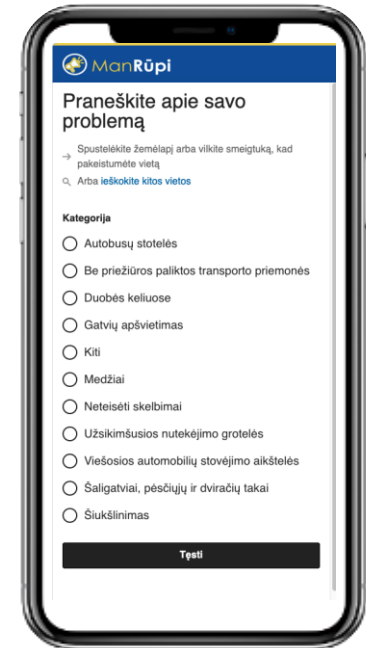
Annalisa Addis, Lisbon Council

Hosted by 

futural-project.eu

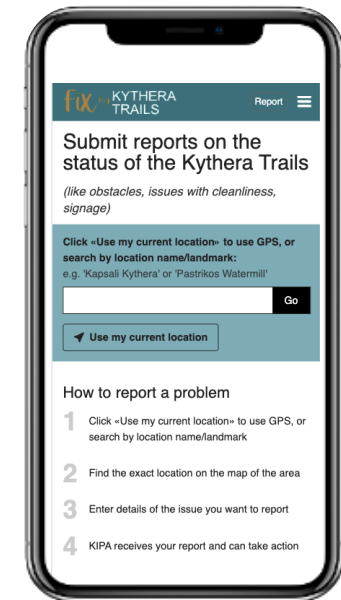
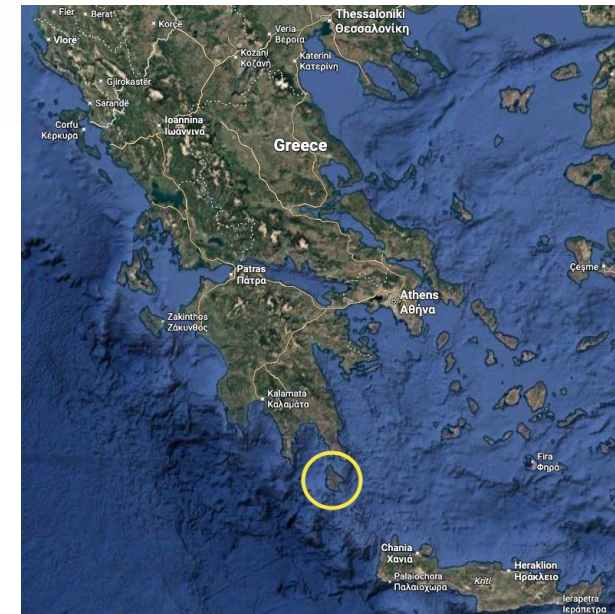
Man Rūpi

- **Problem:** Citizen engagement
- **The solution: Man Rūpi**, a platform to allow real-time reporting of issues found within the municipality area.
- **Target users:** residents of Jonava
- **Impact:** for citizens, increased engagement and ownership as they can actively contribute to taking care of Jonava. For the Municipality, simplified issue follow-up.



FixMy Kythera Trails

- **Problem:** maintenance of over 100+ km of hiking trails in the Greek island of Kythera
- **The solution:** **FixMy Kythera Trails** provide an easy way to submit reports on the status of the trails.
- **Target users:** residents and tourists
- **Impact:** with real-time information on trail status, KIPA can better organise maintenance of the trails, while citizens and tourists can feel engaged in taking care of the natural heritage of the island.



Man Rūpi demo





FUTURAL

Understanding Smart Villages: From concept to practice

PREPARE partnership

Objectives & agenda

- To start the work of the first day of the EU-RIF
- To introduce some of the elements of the **European rural innovation ecosystem**
- To introduce the concept of **Smart Village**
- To present and real cases experiences

Outline

- ❖ 11,30 – 11, 35 | Introduction
- ❖ 11,35 – 11,50 | Introduction to **concepts**, state of play
- ❖ 11,50 – 12, 50 **Panel discussion**
- ❖ 12,50 – 13,00 | Comments, discussion, Q&A **with the audience**

Introduction: understanding... who's here

Slido 1: which type of *stakeholder* do you represent?

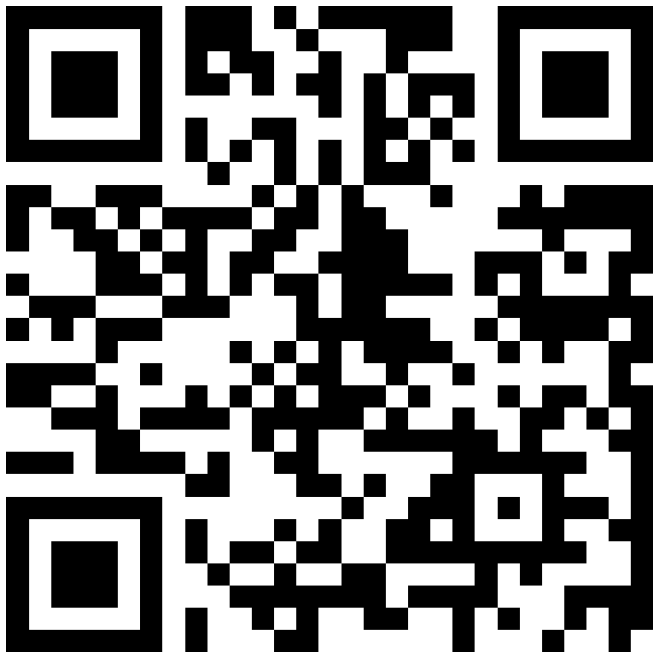


Either you:

- Scan the QR code (witht your phone's camera or app OR
- You search online
 - <https://www.slido.com/>
 - Enter the code: **5037643**

Introduction: exploring... what's smart

Slido 2: What comes to your mind when you think about the word "*Smart*"?



Either you:

- Scan the QR code (witht your phone's camera or app OR
- You search online
 - <https://www.slido.com/>
 - Enter the code: **5037643**

Introduction: exploring... what's smart

Slido 3: What comes to your mind when you think about the word "***Smart Village***"?

Either you:

- Scan the QR code (witht your phone's camera or app OR
- You search online
 - <https://www.slido.com/>
 - Enter the code: **5037643**



Co-funded by
the European Union



FUTURAL

Smart Villages: From concept to practice

Kim Smedslund, *PREPARE*

Hosted by **JO
N
VA**

futural-project.eu

Smart village process starts...

The EU Action for Smart Villages (2017) states that ‘several EU policy areas and funds are actively promoting aspects of the development of Smart Villages’

- A place to live, work and raise families.
- Need of jobs, basic services, connectivity and smart transport solutions
- Enabling climate for entrepreneurship, new types of business such as portal-based services, and connected rural businesses in rural and rural-urban contexts.
- Place-related specialisation or diversification and intelligent logistics allowing villages to provide their products and services more efficiently on urban and global markets.
- **A Smart Village would typically pay attention to** e-literacy skills, access to e-health and other basic services, innovative solutions for environmental concerns, circular economy application to agricultural waste, promotion of local products supported by technology and ICT, implementing and taking full benefit of smart specialisation agri-food projects, tourism and cultural activities, etc.

Concepts and definitions 1 – Smart Village

The EU working definition of Smart Villages developed by the Smart Eco-social Villages Pilot Project (2019) [Pilot project - Publications Office of the EU](#)

Smart Villages are **communities** in rural areas that **use innovative solutions** to improve their resilience, building on local strengths and opportunities. They rely on a **participatory approach** to develop and **implement their strategy** to improve their **economic, social and/or environmental** conditions, **in particular by mobilising solutions offered by digital technologies**. Smart Villages benefit from **cooperation and alliances** with other communities and actors in rural and urban areas. The initiation and the implementation of **Smart Village strategies** may build on existing initiatives and can be funded by a variety of public and private sources.

Concepts and definitions 2 – local innovation structures

- (Functional) village, place, territory, area
- Innovative partnerships
- European Innovation Partnerships,
- Clusters
- Different innovation structures...
- Start-up villages - <https://publications.jrc.ec.europa.eu/repository/handle/JRC132646>
 - "A place (or a network of small places) that embraces innovation and **ambitious entrepreneurship** as a way to unlock development potential and support wellbeing in rural areas".
 - five key conceptual building blocks: innovation, entrepreneurship, rural space, multiple scales, and ecosystems

Concepts and definitions 3 – Specialisation

The three pillars of Smart specialisation S3

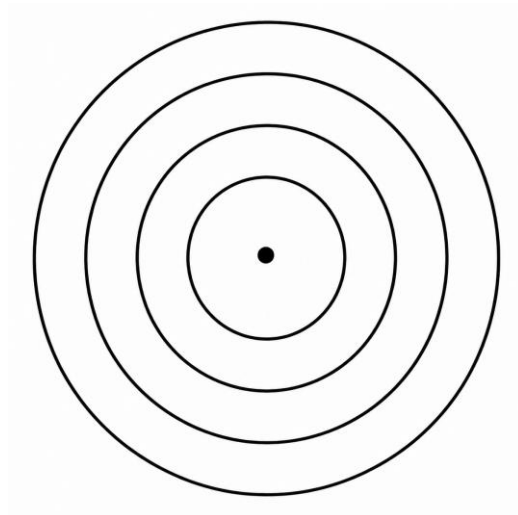
- 1. Localisation** Smart specialisation is a **place-based approach**, it builds on the assets and resources available on the territory.
- 2. Prioritisation** S3s have to **identify and concentrate resources on a limited set of areas**, the so-called S3 investment priorities.
- 3. Participation** S3s require stakeholders from the **quadruple helix** (public sector, research, private sector and civil society) to engage throughout the strategy-cycle. Local actors need to support the definition, review, monitoring and implementation of S3 investment priorities.

With Smart Specialisation, research and innovation are mainstreamed for the first time as tools for regional development.

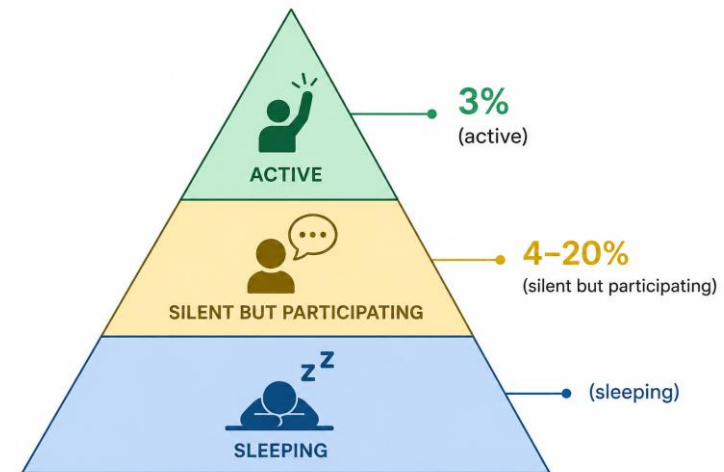
https://ec.europa.eu/regional_policy/policy/communities-and-networks/s3-community-of-practice/about_en

In pictures... about (very) local innovation

Functional area – Innovative area



Participation activity – willingness
places/ villages



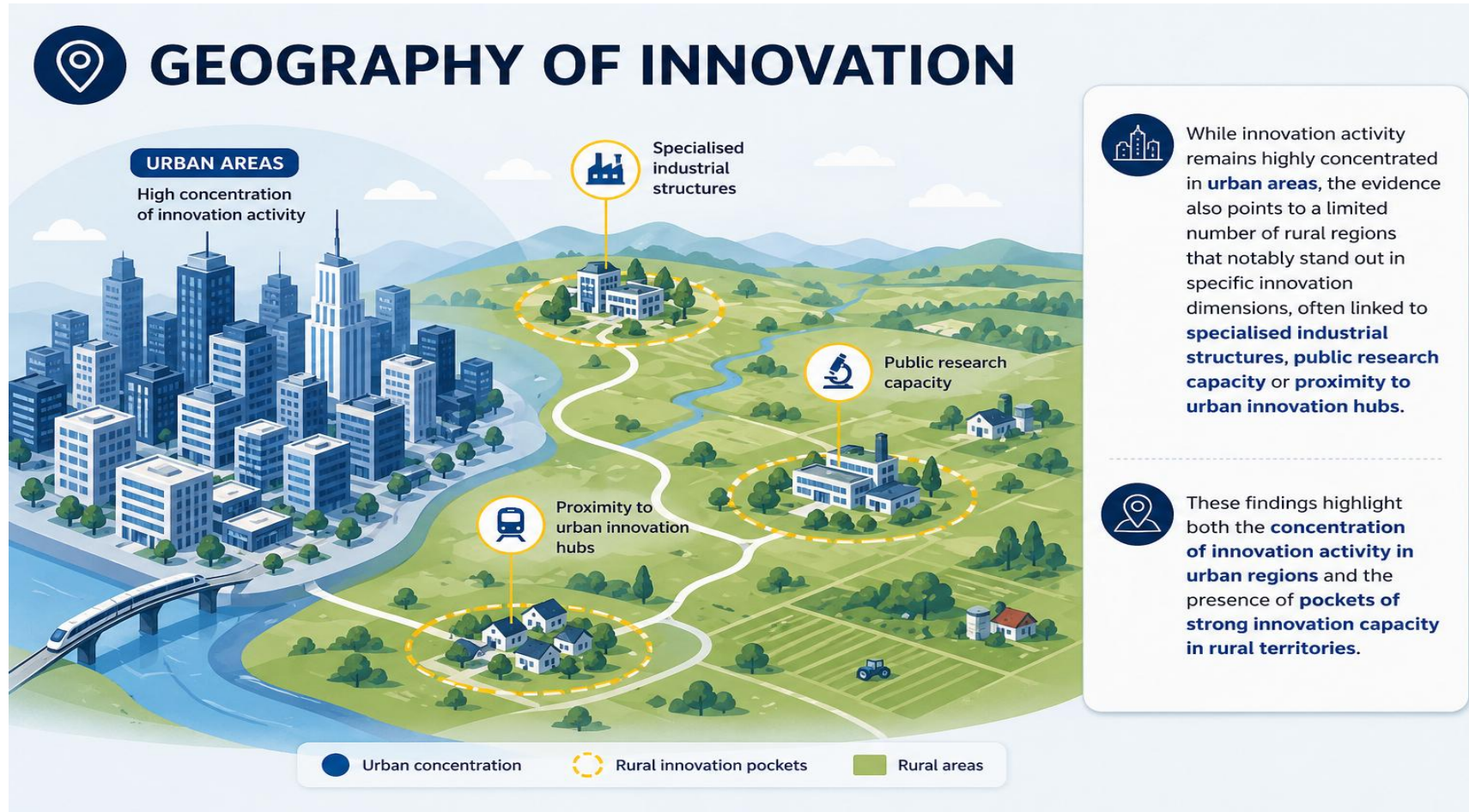
Funding Tools & programs innovations

- LEADER/CLLD, Interreg, Horizon → Challenge of sustainability and continuity
- EIP - European Innovation Partnership on Agriculture Productivity and Sustainability,
- ITI-funds - Urban rural ITIs. As well as being used in a city region context, the ITI can be used to strengthen urban rural linkages within a functional urban area.

“The three-year Urban Rural Gothenburg, or Stadslandet, project, for sustainable development in south-west Sweden has helped ensure greater green innovation and green business development between the City of Gothenburg and the surrounding countryside. This was accomplished by using the so-called **penta-helix model**, which entails cooperation between municipalities, the business sector, local residents, civil society organisations, and academia” The focus in the project's five **innovative test beds and four local hubs** in north-eastern Gothenburg is primarily on small and medium-sized enterprises in the food, logistics, tourism, and ecological business sectors.

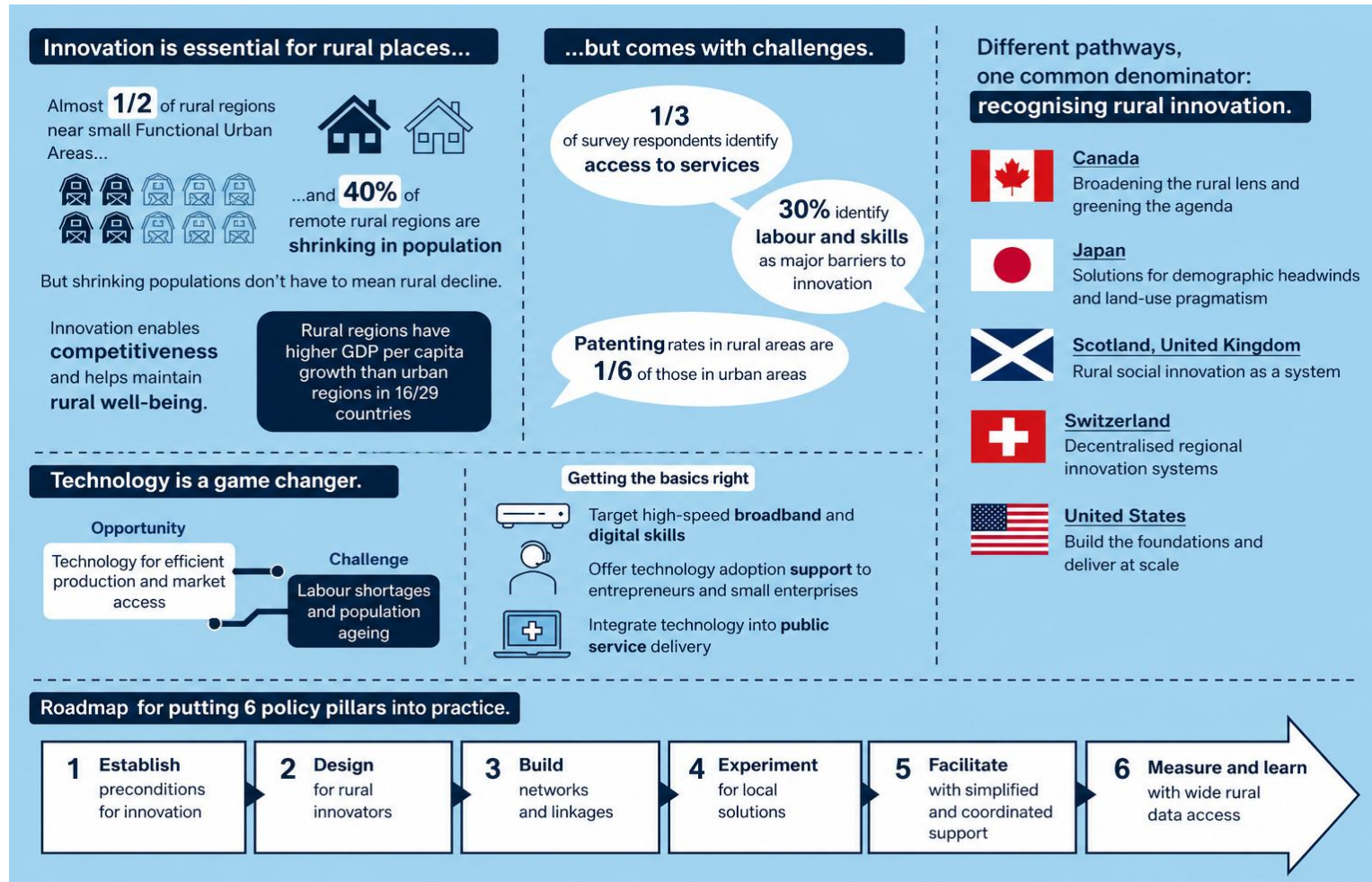
https://ec.europa.eu/regional_policy/projects/projects-database/urban-rural-areas-in-gothenburg-sweden-creates-new-green-businesses_en

Innovation in the EU: technological and creative performances in numbers across urban and rural regions . JRC
27.1.2026 - <https://publications.jrc.ec.europa.eu/repository/handle/JRC145387>



Rural Innovation Pathways – Connecting People, Places and Ideas. OECD studies 25.11.2025.

https://www.oecd.org/en/publications/rural-innovation-pathways_c86de0f4-en/full-report/rural-innovation-pathways-infographic_d02bdff3.html#introduction-d5e129



Some practices... <https://www.smartrural27.eu/> , <https://www.smartrural21.eu>

- **Stanz in Mürzthal Austria :**
 - Energy community,
 - token
 - e-taxi
- **Raudanmaa Finland:**
 - multipurpose hall
 - Cooperative
- **Ovenhausen (Germany) :**
 - Digital capacities, co-creation,
 - trained villagers
 - digital health, village broadcast,
 - tailored services



Pitmedden - Scotland



Projects supporting rural innovation

- **FUTURAL, Smart ERA** (building Smart Innovation Packages) <https://smartera-project.eu/>
- **PARI** – Paths for Rural Innovation, is a two-year European project exploring how rural territories can build their own **Clusters for Social and Ecological Innovation (CSEIs)**: place-rooted networks of public actors, social economy entities, cooperatives, enterprises and other stakeholders that work together to **improve quality of life, strengthen local economies, and protect natural environments**.
<https://www.revesnetwork.eu/project/pari/>
- **INSPIRE**: Inspire a **smart transition** in aware and **forward-looking rural communities enabled by digitisation** and working in the 6 dimensions of the smart-village rationale (Economy, Environment, Governance, Living, Mobility, People), The **enhanced Policy Instruments (PIs)** will incorporate the lessons learnt in the knowledge exchange process and will aim at proposing newly focused, smarter, more territorialised, and wide-ranging PIs for rural areas. <https://www.interregeurope.eu/inspire>

Thematic examples:

- FLIARA (2023-2025): Highlights the role of women in rural innovation (WRI) by mapping and encouraging **women-led innovations**.
- ESIRA (2023-2025): Focuses on enhancing the socio-economic conditions of **marginalized groups** in rural areas through social innovation.
- InnoCoop (2024-2027): Helps **rural SMEs boost** innovation through networking and policy support.

See also https://agriculture.ec.europa.eu/overview-vision-agriculture-food/research-innovation/rural-opportunities_en

Concluding thoughts

Geography: “a place of innovation”?

Structures: diversity - dispersed

“Places that matter”

Triggers: people, resources, funding

Rural transition – smart transition?

“Leave no one behind”



FUTURAL

Thank you!



UNIVERSITÀ DI PISA



Speakers panel



Renata Rudnicka
Agrifood Lithuania



Aukse Lebeckienė
Kaišiadorys District LAG



Virginija Šetkienė
Lithuanian Rural Communities Union



RURBANIVE
RURAL · URBAN · IMMERSIVENESS

**RURal-uRBAN synergies emerged in an
immersIVE innovation ecosystem**

EU Rural Innovation Forum: 05.05.2026.

Renata Rudnicka
AgriFood Lithuania DIH

**AgriFood DIH
Lithuania**



FUTURAL



**Co-funded by
the European Union**

Funded by the European Union. Views and opinions expressed are however those of the author(s) only and do not necessarily reflect those of the European Union or the European Research Executive Agency. Neither the European Union nor the granting authority can be held responsible for them.



RURBANIVE
RURAL · URBAN · IMMERSIVENESS

**RUral-uRBAN synergies emerged in an
immersIVE innovation ecosystem**

Empowering the **FUTure through innovative Smart
Solutions for **rURAL** areas**

AgriFood **DIH**
Lithuania



FUTURAL



**Co-funded by
the European Union**

Funded by the European Union. Views and opinions expressed are however those of the author(s) only and do not necessarily reflect those of the European Union or the European Research Executive Agency. Neither the European Union nor the granting authority can be held responsible for them.

EU Rural Innovation Forum

EU Rural Innovation Forum
Jonava, Lithuania
2026 May 5-6

AgriFood Lithuania

Digital Innovation Hub & Cluster



Driving digital transformation in agriculture, food and associated sectors.



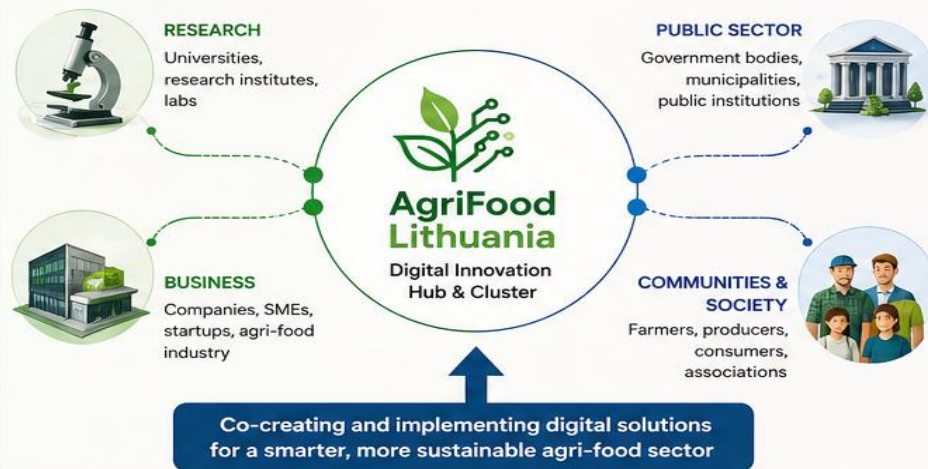
AgriFood Lithuania is a **Digital Innovation Hub and Cluster** that brings together major research, business and public stakeholders in Lithuania for the common pursuit of digital transformations in the agriculture, food and associated sectors.

WHAT WE DO

- Connects research, business and public stakeholders in Lithuania
- Links stakeholders with international and cross-sector initiatives
- Provides all-round support in research, development and deployment of AgriFood Tech innovations
- Accelerates digital transformation and innovation in the agri-food ecosystem



OUR ROLE: YOUR INNOVATION PARTNER



NETWORKS & RECOGNITION

- KLASTER LT**
Member of the Lithuanian Clusters Network (KlasterLT)
- EUROPEAN CLUSTER COLLABORATION PLATFORM**
Member of the European Cluster Collaboration Platform
- EUROPEAN CLUSTERS ALLIANCE**
Member of the European Clusters Alliance
- SMART SENSORS 4 AGRIFOOD**
Member of Smart Sensors 4 AgriFood
- esic.lt**
Part of the "ESIC.LT" consortium – confirmed as a European Digital Innovation Hub in Lithuania
- eit Food**
EIT Food Hub in Lithuania since March 2021

Slide #42

CLUSTER MAPPING – FIND YOUR PARTNERS

Discover a wide range of partners within the EU or worldwide from different countries, regions, sectors, or industrial ecosystems.



We connect you to the right partners, opportunities and markets.



Together, we cultivate innovation and digital solutions for a sustainable future.



Let's build the future of AgriFood – together!

www.agrifood.lt



Co-funded by the European Union

Smart Village vs. Startup Village

EU Rural Innovation Forum
Jonava, Lithuania
2026 May 5-6

Slide #43



Co-funded by
the European Union

Smart Village

- Focus: improving rural quality of life
- Uses digital and innovative solutions for public services, infrastructure, energy, mobility, healthcare
- Driven mainly by municipalities, communities, and public stakeholders
- Goal: more sustainable, inclusive, and connected rural areas

Startup Village

- Focus: boosting rural entrepreneurship and innovation
- Supports startups, SMEs, incubation, investment, and market access
- Driven by entrepreneurs, innovation hubs, and business ecosystems
- Goal: economic growth, job creation, and new business development



EU Rural Innovation Forum

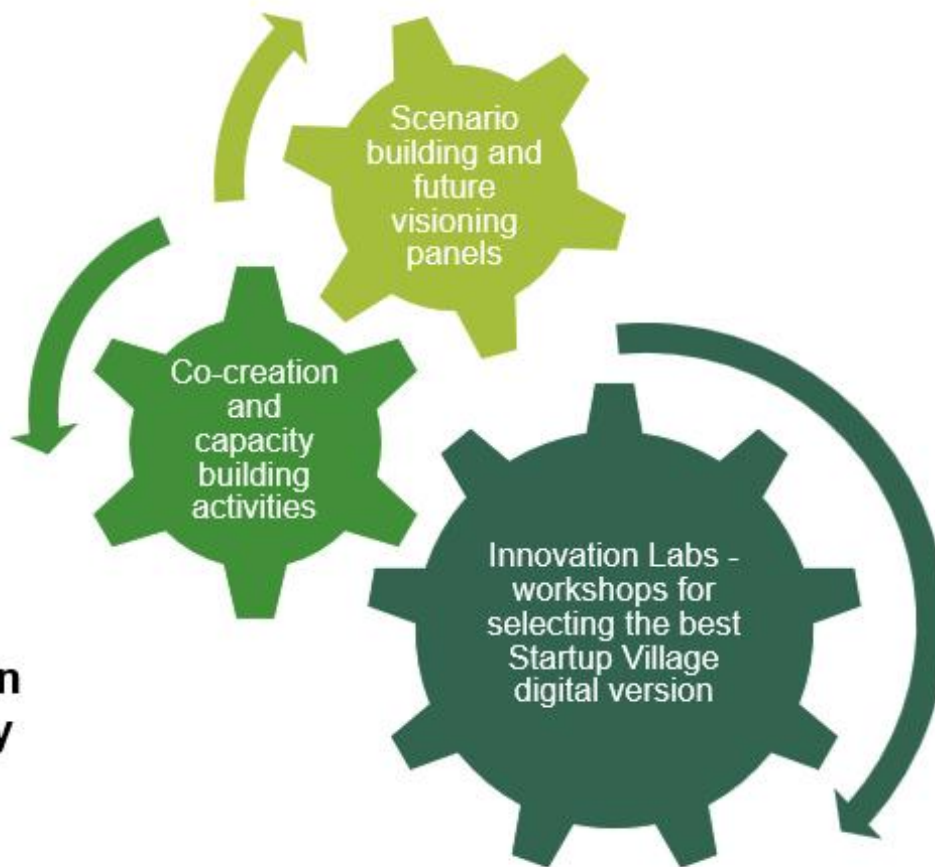
Development support for Startup Village ecosystems

EU Rural Innovation Forum

Jonava, Lithuania

2026 May 5-6

Startup Village - place (or a network of small places) that embraces innovation and ambitious entrepreneurship as a way to unlock development potential and support wellbeing in rural areas.



Promotion of startup-driven innovation in rural areas by utilizing advanced digital technologies (XR, VR).



European Startup Village Forum



Slide #44





Framework for Startup Village ecosystem event organization

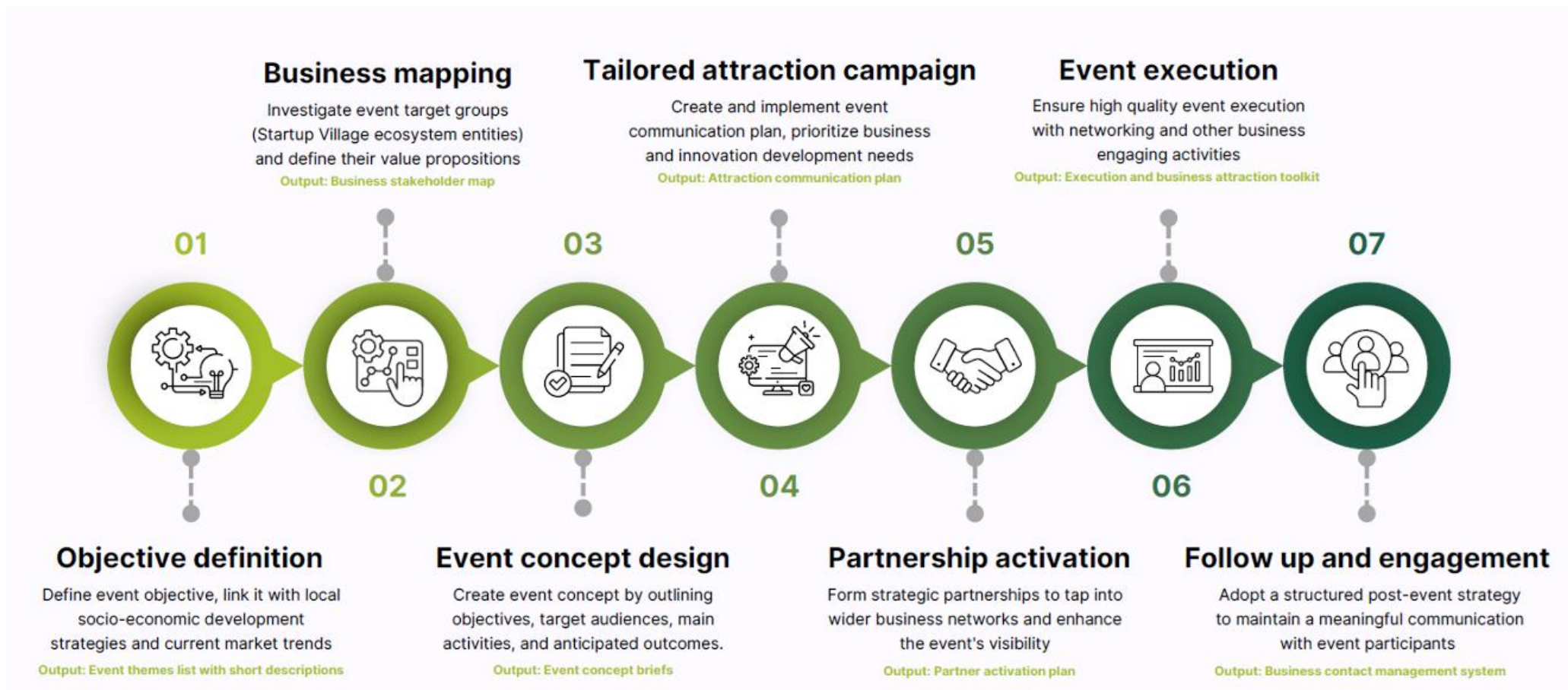
Seven actions for carrying out events focused on the Startup Village ecosystem formation and business attraction in rural areas

EU Rural Innovation Forum
Jonava, Lithuania
2026 May 5-6

Slide #45



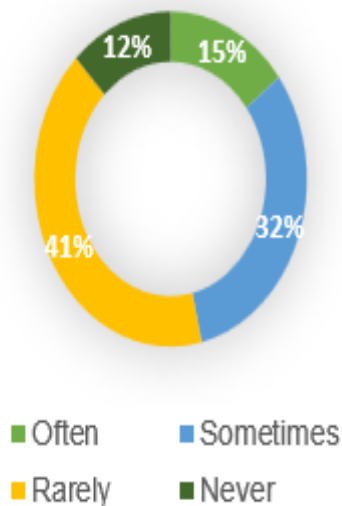
Co-funded by
the European Union



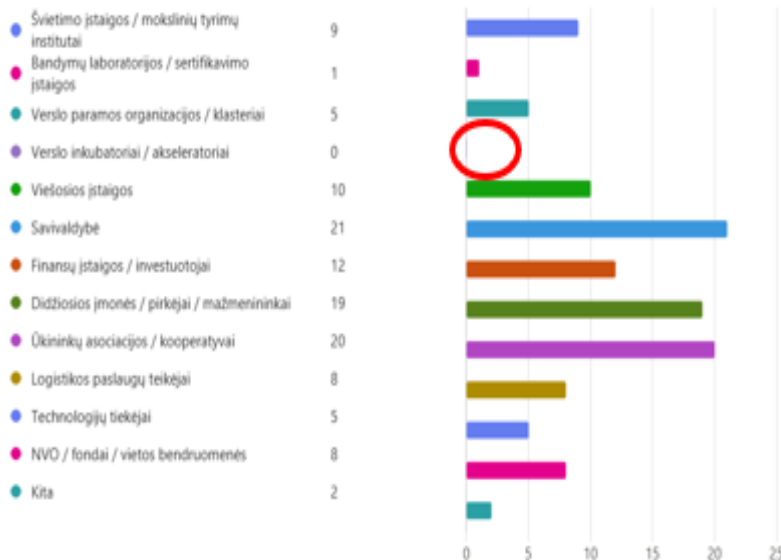


Business needs and cooperation

Do you cooperate with other local businesses and start-ups?



What types of organizations do you actively communicate or cooperate with in the Kėdainiai district?



In your opinion, which area should be the focus of most efforts to improve business conditions and strengthen cooperation in Kėdainiai?





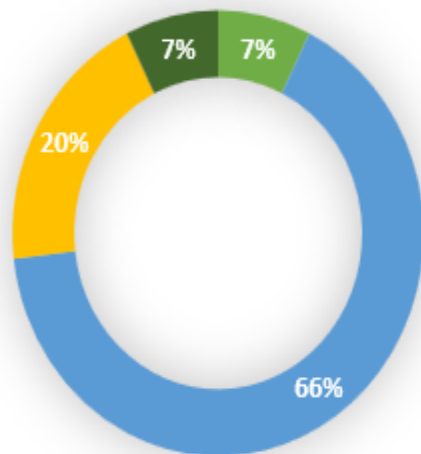
Business and innovation support ecosystem

EU Rural Innovation Forum
Jonava, Lithuania
2026 May 5-6

Slide #47

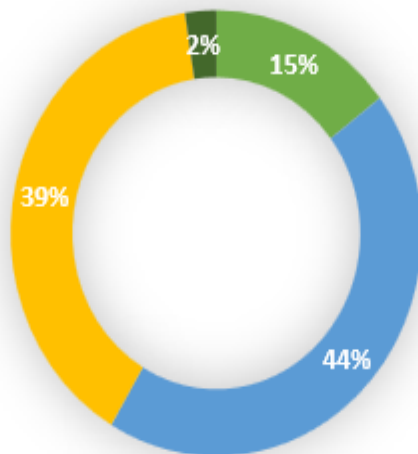


How do you assess the current business ecosystem in the region in terms of innovation?



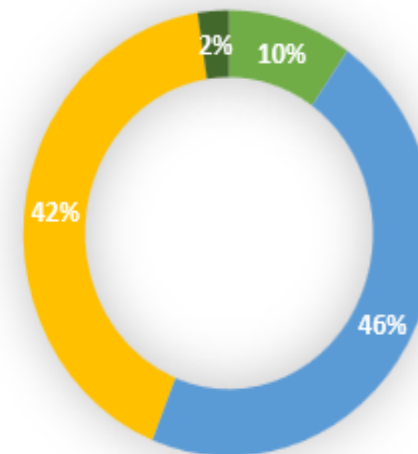
■ Strong ■ Average ■ Weak ■ Non-existent

How do you assess the role of local authorities in supporting innovation and start-ups?



■ Very well ■ Satisfactory ■ Weak ■ Non-supporting

How would you rate the overall culture of innovation in the region (openness to new ideas, experimentation, collaboration)?



■ Very strong ■ Average ■ Weak ■ Non-existing

“Improving business and innovation environment in Kėdainiai”

Co-creation workshop in Kėdainiai

EU Rural Innovation Forum
Jonana, Lithuania
2026 May 5-6

1

**Sandra Barzdienė, Kėdainiai
Spėčius**

Business Opportunities & Innovation
Promotion

2

Sonata Gabševičienė

Kėdainiai Business Map 2025: City,
Village, Shared Opportunities

3

Irena Petraitienė

Labour Market Trends

4

Dangiras Kačinskas

When business and vocational training
speak the same language

5

Danguolė Paulauskė

Rurbanive Project & Survey Results





Future challenges/opportunities



#

Limited digital infrastructure

- Many rural areas still lack reliable internet access, 5G networks, or digital tools.
- This hampers the ability to scale tech-based services, access online markets, or provide digital training.
- Without equal digital access, rural entrepreneurs risk being left behind in the digital economy.

#

Talent attraction and retention

- Young professionals often migrate to urban areas for better career opportunities.
- Rural areas may struggle to attract or keep skilled individuals essential for tech innovation and scaling.
- Entrepreneurship suffers when there's a shortage of digital, managerial, or creative talent.

#

Sustainability and impact

- Social ventures must balance community impact with financial viability.
- Scaling in rural areas is complex due to smaller markets, logistical issues, and cultural diversity.
- Long-term sustainability is challenged by reliance on grants or external support.

#

Access to funds

- Rural startups face difficulties securing seed capital or attracting investors.
- Many financial institutions are risk-averse or lack local knowledge about rural social ventures.
- Innovative funding models (e.g., micro-investments, social impact bonds) are still underdeveloped in these regions.

#

Weak support ecosystems

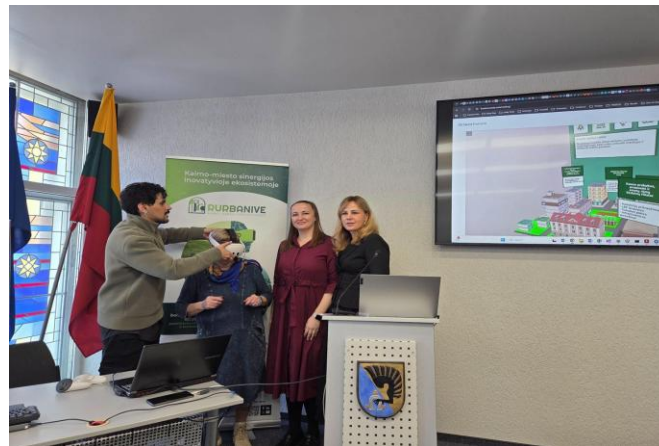
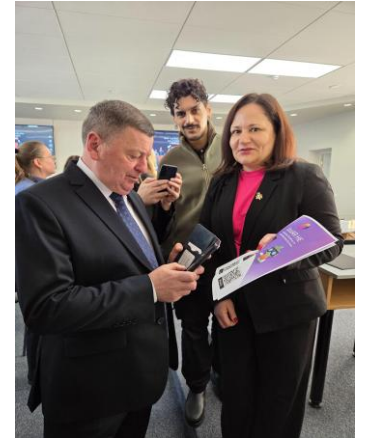
- Lack of local incubators, accelerators, or mentors tailored to social and digital entrepreneurship.
- Entrepreneurs often operate in isolation without peer support or structured networks.
- Regional policies may be generic and not targeted to rural-specific needs.

Rural–Urban Immersiveness (XR) Campaign: RUE Demonstration in Kėdainiai

EU Rural Innovation Forum
Jonava, Lithuania
2026 May 5-6

XR Campaign – Kėdainiai RUE Demonstration

- AR/XR introduction to Virtual Startup Village concept
- Live demo + guided app installation
- Immersive exploration of RUE ecosystem
- Positive feedback: higher engagement and clarity, strong interest in further use



Slide #50



Co-funded by
the European Union

Community Store RUE integration and use within the RUCL

EU Rural Innovation Forum
Jonava, Lithuania
2026 May 5-6

SV KDM PLATFORM

(Municipal digital ecosystem portal)

- Unified entry point
- Ecosystem overview
- Events & opportunities
- Results & impact visibility

COMMUNITY STORE (RUE INTEGRATION LAYER)

(Operational toolkit for RUCL users)

- Ecosystem Navigator (mapping actors & links)
- Engagement & Opportunity Pathways (events, mobilisation)
- Learning & Feedback Dashboard (monitoring & insights)
- Collaborative Design Workspace (co-creation)

XR CAMPAIGN – RUE DEMONSTRATION

(Onboarding & immersive entry experience)

- AR/XR introduction to Virtual Startup Village
- Live demo + guided onboarding
- Immersive exploration of RUE ecosystem
- First-use activation + feedback collection



Slide #51



Co-funded by
the European Union



RURBANIVE

RURAL · URBAN · IMMERSIVENESS

RURal-uRBAN synergies emerged in an immersIVE innovation ecosystem



Co-funded by
the European Union

Funded by the European Union. Views and opinions expressed are however those of the author(s) only and do not necessarily reflect those of the European Union or the European Research Executive Agency. Neither the European Union nor the granting authority can be held responsible for them.



Co-funded by
the European Union



FUTURAL

Kaišiadorys: Innovative rural energy

Auksė Lebeckienė, *Kaišiadorys district LAG*

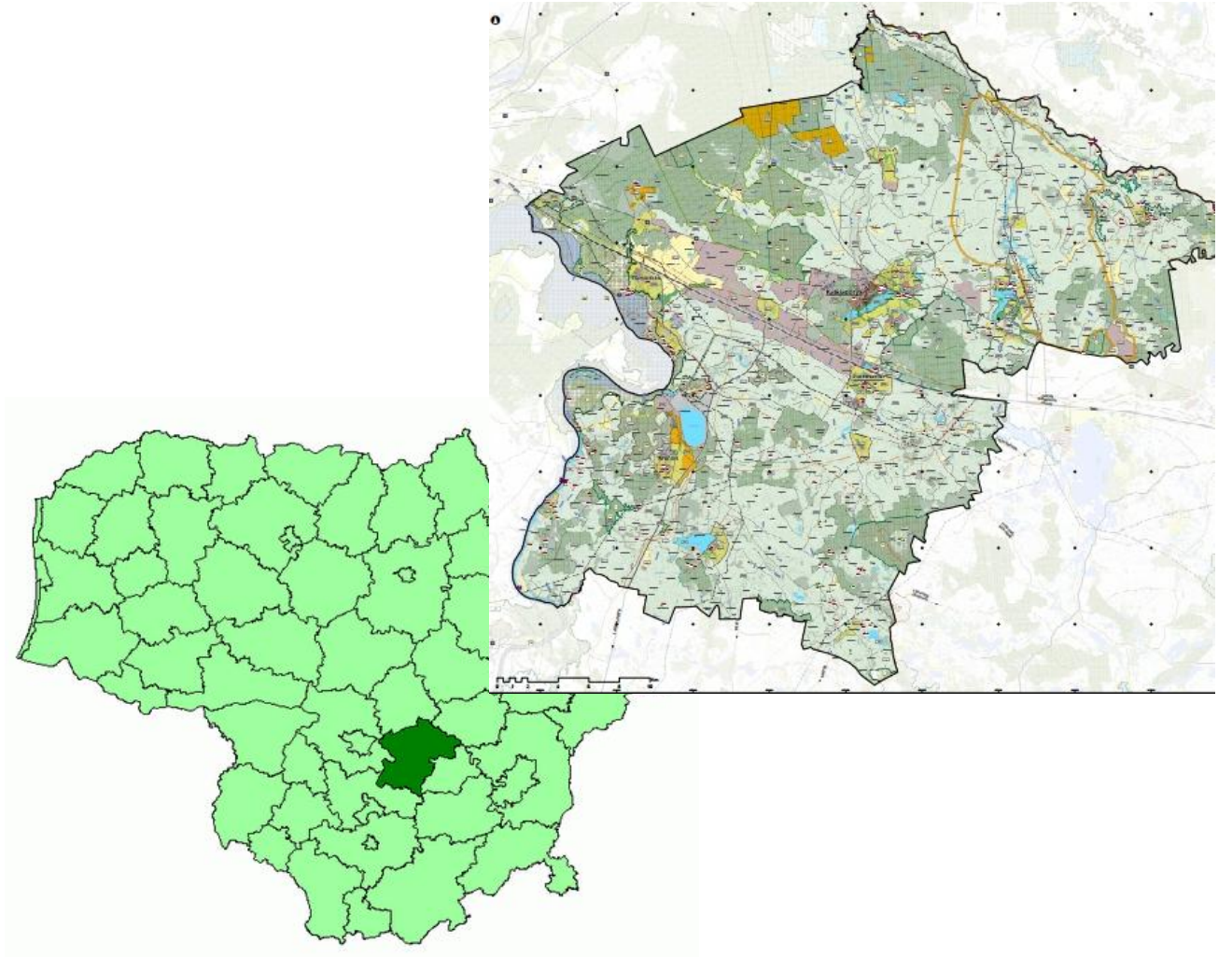
Hosted by 

futural-project.eu

Perspective

Population – 28 945

Population in rural area – 20 636



Team and LDS

LAG members: 63

Board members: 20

LDS:

- 2008 - 2014 strategy ~ 2 608 695 Eur
- 2014 - 2020 strategy ~ 2 899 715 Eur
- 2024 – 2029 strategy ~1 514 311 Eur

„Development of local economic ecosystems by implementing solutions to meet sustainable energy and health needs“



Rural community meetings

20 years of tradition



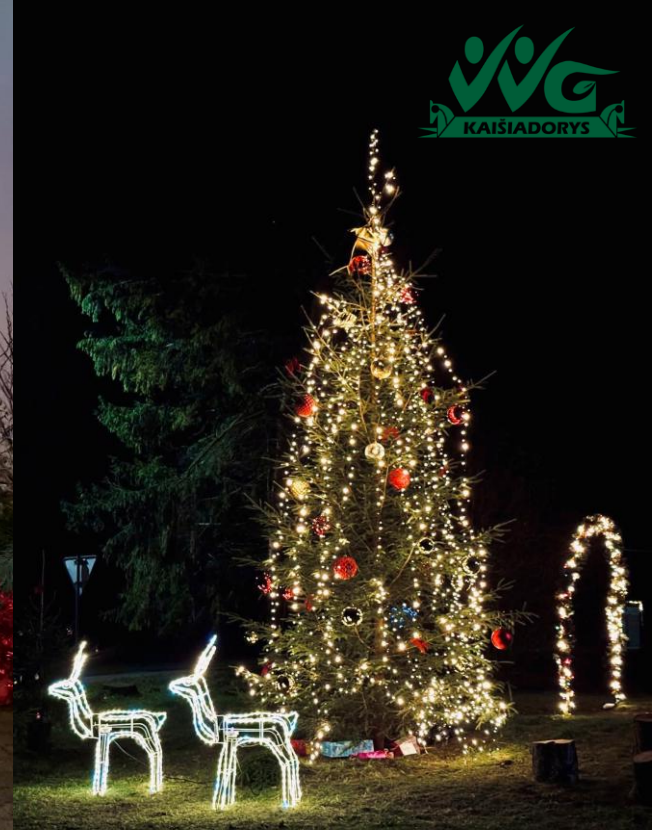
Cooler communities election

15 years of tradition

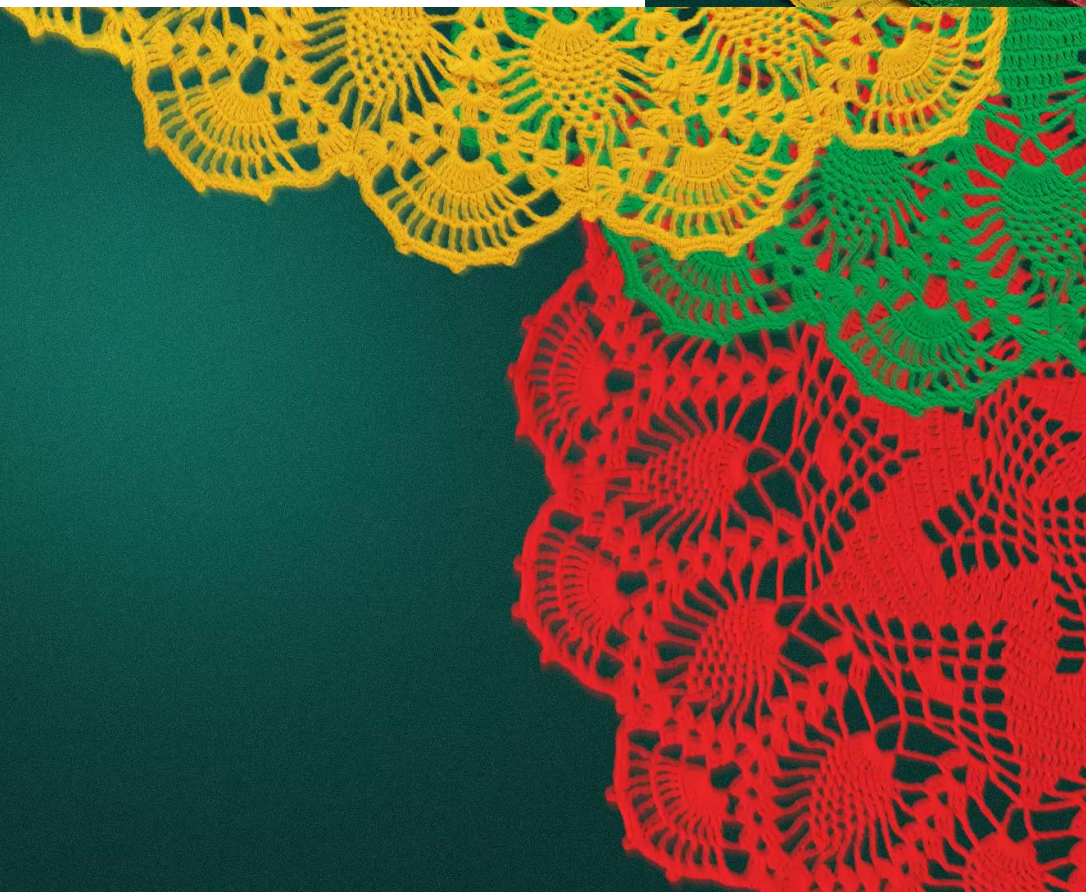


Atractive and involved

- LAG christmas
- Christmas e-shopping
- Christmas decoration
- competition



Textile Traditions in Action



Smart / community business

BUSINESS



RURAL COMMUNITY



COMMUNITY BUSINESS



ECONOMY

RURAL COMMUNITY

SOCIAL BUSINESS

PARAMETERS

PUBLIC ADMINISTRATION

STATISTICS

Reality

PROFIT

INTERNET

TAX OFFICE

MINISTRY OF
AGRICULTURE

PUBLIC PROCUREMENT

WORKPLACE

PROGRESS

CONTROL

NATIONAL PAYING AGENCY

VAT

SODRA

PRIVATE
INTERESTS

BUSINESS PLAN

SANCTIONS

COVID-19

REINVESTMENT



A job in a village is not a number

It's an emotion

NGO „I LOVE THE VILLAGE“

- In the middle of the forests
- Employees feel a special connection with nature and animals
- [Myliu kaimą - Animal & Forest Therapy](#)



DARSUNO HOUSE

- Educational activities for children, accommodation, event place
- [Darsūno namai | Facebook](#)



FOX Teahouse

• [Lapės arbatinė](#)



Lapės arbatinė



Puslapis · Kavinė



Vytauto g.24, Zasliai, Lithuania




(8-673) 15629



paperciubendruomene.2303@gmail.com



Dar neįvertinta (apžvalgų: 1) 

Nuotraukos

[Žiūrėti visas nuotraukas](#)



Lapės arbatinė

3d · 



Lapės arbatinė

12 Patiktukų · 84 stebėtojai



Stebimas



Siųsti pranešimą




Ieškoti



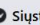
Papartis - Paparčių krašto bendruomenės verslas

198 Patiktukų · 268 stebėtojai



 Skambinti dabar

 Patinka

 Siųsti pranešimą

Vilunai village community house

- Leather goods [A.Gan](#)
- Beauty salon
- Car service
- Plumber, builder
- Library
- Culture hall



NEMUNAS CHILDREN'S DAY CENTER

Anglininkai community



Mobile library

- <https://www.kaisiadoriuvb.lt/paslaugos/mobilioji-biblioteka/>



BIBLIOBUSO MARŠRUTAS



KAIŠIADORIŲ
VIŠGŲ BIBLIOTĖKA

PIRMADIENIS

KAIŠIADORIŲ APYLINKĖS SENIŪNIJA

9.15 val. - 09.55 val. Vilkiškės
10.05 val.-10.45 val. Kalniškės
11.00 val.- 11.45 val. Pypliai
12.00 val.-12.45 val. Gudzenka/Rečionys
ŽIEŽMARIŲ APYLINKĖS SENIŪNIJA
14.05 val.-14.30 val. Aviliai
14.35 val.-15.15 val. Vladikiškės
15.20 val.-15.45 val. Stoniava
15.50 val.-16.15 val. Mediniai Strėvininkai
16.30 val.- 17.15 val. Mūro Strėvininkai
17.20 val.-17.45 val. Liutonys

ANTRADIENIS

NEMAITONIŲ SENIŪNIJA

09.15 val.- 09.45 val. Kibučiai
09.50 val.- 10.30 val. Šoliškės-Žostautai
10.35 val.- 11.00 val. Sevelionys
11.15 val.- 12.00 val. Nemaitonys
12.05 val.- 12.35 val. Klėriškės
PALOMENĖS SENIŪNIJA
14.05 val.- 14.30 val. Miežonys
14.35 val.- 15.00 val. Vilionys
15.15 val.-15.45 val. Lomeniai
16.00 val.-16.30 val. Gegužinė
16.45 val.- 17.30 val. Totoriškės-Krivonys

TREČIADIENIS

ŽASLIŲ SENIŪNIJA

09.15 val.- 09.55 val. Stabintiškės
10.00 val.- 10.30 val. Mikalaučiškės
10.35 val.- 11.00 val. Žibavičiai-Karsakai
11.15 val.- 12.00 val. Guronys-Talpūnai
12.05 val.- 12.35 val. Pajautiškės
PRAVIENIŠKIŲ SENIŪNIJA
14.20 val.- 15.00 val. Beištrakiai (Šukiškės)
15.05 val.-15.50 val. Pašuliai
16.15 val.- 17.15 val. Aleksandruvka

KETVIRTADIENIS

PAPARČIŲ SENIŪNIJA

09.25 val.- 10.00 val. Dainava-Dainavėlė
10.05 val.- 10.55 val. Kaukonyos
11.00 val.- 11.25 val. Galviškės
11.30 val.- 11.55 val. Bekštonys
12.00 val.- 12.30 val. Našlėnai
RUMŠIŠKIŲ SENIŪNIJA
14.15 val.- 14.45 val. Juodiškės
14.55 val.- 15.25 val. Pamieris
15.45 val.- 16.30 val. Grabučiškės
16.40 val.- 17.25 val. Karčiupis

PENKTADIENIS

KRUONIO SENIŪNIJA

09.20 val.- 09.50 val. Morkūnai
10.00 val.- 10.30 val. Gintėiškės
10.50 val.- 11.40 val. Anglininkai-Ručkakiemis
12.00 val.- 12.30 val. Užgirėlis
RUMŠIŠKIŲ SENIŪNIJA
14.15 val.- 14.45 val. Bubliai
14.50 val.- 15.30 val. Rusonys
15.35 val.- 16.00 val. Mižiniai
16.10 val.- 16.45 val. Užtakai
17.00 val.- 17.30 val. Lašiniai



E-korys / E-honeycomb

• <https://e-korys.lt/kontaktai/>



E-KORYS.LT

KAIŠIADORIŲ VERSLO IR SOCIALINIŲ
PASLAUGŲ KONSULTACIJŲ CENTRAS,
IŠMANIOJI PRAMOGŲ ERDVĖ

pagal Kaišiadorių rajono kaimo vietovių vietos plėtros
2015-2020 metų strategijos VPS priemonę „Sumanaus kaimo
kūrimas ir plėtra“.



E-KORYS.LT
Kaišiadorių verslo ir
konsultacijų centras. Šimnėpys
101, Vilnius ir plėčiūnėnų gatvė
14, 01000 Vilnius, Lietuva
Viešojo pabrūdos strategija „Kaišiadorių
rajonas: viešojo pabrūdos 2015-2020 metų
priemonė „Sumanaus kaimo kūrimas“

Šio projekto tikslas – didinti
populiarumą ir modernumą pas
atgimimo pabrūdos bei galimybių
pabrūdos ir bendradarbiavimo
raukšlėms technologijoms ir
sprendimams Kaišiadorių rajone.

PARTNERIAI:



Smart and Sustainable Žiežmariai



International project

OFF-GRID: Renewable Energy DIY for rural development

8 partners from 5 countries



Video material:

- [Off-Grid DIY Renewable Energy for Rural Development](#)
- [Wind Turbine Model, educational-material - The Wind Challenge](#)

INNOVATION DEPENDS ON PERSPECTIVE



INNOVATION
in the city



REALITY
in rural areas



STRONG COMMUNITIES – STRONG REGIONS



Co-funded by
the European Union



FUTURAL

National perspective on village / community innovation

Virginija Šetkienė, *Lithuanian Rural Communities' Union*



Hosted by **JO
N
VA**

futural-project.eu

Innovation in rural Lithuania

- combining functions
- finding new ways to deliver existing services
- reorganising services

Multifunctional rural centres as service hubs

In many Lithuanian villages and small towns, former schools or cultural houses have been transformed into multifunctional centres.

These centres typically combine:

- cultural activities
- social support services
- youth engagement programmes
- adult education
- sometimes co-working or small business space.

Mobile public services in sparsely populated areas

Mobile library services (bibliobus systems)



Mobile public services in sparsely populated areas

Kviečiame **NEMOKAMAI** atlikti kraujo tyrimus



medicina practica
www.zsmedis.kuoprotics.lt
MOBILI KRAUJO LABORATORIJA

Š.m. _____ mėn. ____ d.
Mobilii kraujo tyrimų laboratorija atvyksta

BUS ATLIEKAMI PSA IR KITI TYRIMAI IŠ KRAUJO
Laboratorija dirbs nuo ____ val. iki ____ val.

- Kviečiame vyrus, o ypač nuo 45 metų amžiaus, atlikti PSA tyrimą (dėl prostatos vėžio)
- Taip pat vyrams ir moterims bus atliekami ir kiti tyrimai iš kraujo pasirenkant numatytas programas (norint išsitierti cukraus ir/ar cholesterolio kiekį kraujyje, reikia būti nevalgus)
- Tyrimų rezultatai bus pranešti pacientui



Mobile health and preventive care units

Social innovation through local entrepreneurship

- community-run cafés or small food production initiatives
- craft and training workshops
- local tourism experiences linked to cultural heritage or nature or food



Dacijonų kaimo bendruomenė

Siūlome pavėžėjimo paslaugas su vairuotoju (patogiam, devynių vietų autobusiuke):

- į oro uostus Vilniuje, Kaune, Palangoje, Rygoje; į jūrų uostą Rygoje, Klaipėdoje
- į sveikatos įstaigas Tauragėje ir kituose miestuose (Kaune, Vilniuje, Klaipėdoje ir kt.)
- nuo vaikų ugdymo įstaigos į užsiėmimų, būrelių vietas;
- į darbą

Naudokitės mūsų paslaugomis, jei planuojate vykti į:

- darbo komandiruotes, seminarus, mokymus;
- sporto varžybas;
- koncertus ir spektaklius;
- keliones, turistines vietas;
- šventes, renginius;
- mergvakarius ir bernvakarius;

Pavėžėjimas teikiamas patikimu, komfortišku, ekonomišku ir saugiu Toyota Proace Verso autobusiuku. Galesite keliauti be vargo trumpais ir ilgais atstumais.



Teikite užsakymus žinute Dacijonų kaimo bendruomenės socialiniame tinkle (facebook)



Susisiekite su mumis telefonu: +370 (699) 61 336

Social innovation through local entrepreneurship

Community-based transport services







FUTURAL

What does it mean to be “smart”?

Carlo Giua and Brigida Marovelli, *UNIFI*



Co-funded by
the European Union



FUTURAL

What does it mean to be smart?

Unveiling smart territories: why, what and how – perspectives from the territories

Hosted by 

Session Coordinators:
University of Pisa

futural-project.eu

Objectives

- From theory to **real experiences**. To compare literature and theoretical perspectives with experiences and opinions on the ground
- From presentations to **discussion**. To involve participants in interactive, participatory discussions on several aspects of “smart territorial initiatives
- Focus on *smart* **meaning**. To explore and give voice to the different interpretation of “smart” in the initiatives of rural territories
- Focus on the *smart* **process**. To reflect collectively and confront the different processes that rural territories go through when introducing innovations
- Focus on the *smart* **outcomes**. To reflect collectively and share expectations and reflections on the (expected) outcomes – i.e. effects on rural community behaviour

Agenda

Time	Duration (min)	Description
2:15-2:30	15'	Welcome and introduction to the session: objectives, agenda, state of the art and workshop guidelines.
2:30 – 2:35	5'	Break & room preparation (organisation of tables)
2:35 – 2:50	15'	Table discussion: round 1
2:50– 3:00	10'	Quick feedback & transition
3:00 – 3:30	30'	Table discussion: round 2
3:30 – 3:50	20'	Guided cross-table discussion
3:50 – 3:55	5'	Wrap-up and conclusions
3:55 - 4:15	20'	Survey filling

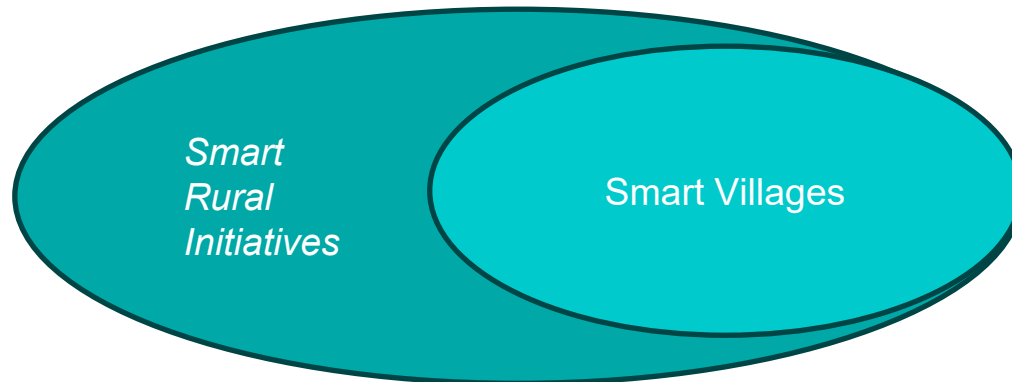
Introduction: what

- To reflect, discuss, share on experiences and opinions on how rural areas **interpret, design, implement** *“smart” territories*
- Workshop in 120 mins
- 3 different rounds, 2 divided in tables, 1 across tables
- 4 tables (15/16 participants)
- 1 facilitator, 1 note taker

Introduction: what

Why smart territories

- Smart is a large and flexible concept related to **innovative solutions'** co-development (output), **place-based** and **participatory approaches** (process), aimed at enhancing **rural quality of life** (outcome)



- Today we want to reflect and share insights on the wider rural smart experiences, NOT only smart villages!

Introduction: the smart *journey*

Smart territories can be observed and studied through
Rural Innovation Ecosystem emergence and behaviour

From empirical and literature-based evidences (*Christmann, G.B., 2020, Sommer et al., 2025, Giua et al., 2026 – in review*) the emergence and behaviour of a rural innovation ecosystem can be observed through **4 main phases**:

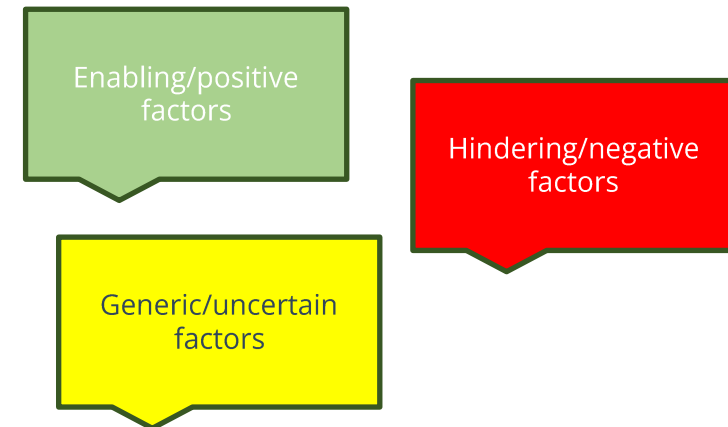
1. **Anchoring**: phase dealing with the **identification of the scope of work** and the dynamics of interaction and rooting of knowledge and **resources** within the territory. It includes the **activation of the core group** and the initial discussion and drafting of the strategy or project.
2. **Activation**: phase in which the **enlarged core group** defines the actors involved in the **strategy** or project and initiates interaction and collaboration to shape local innovation processes.
3. **Co-creation**: phase in which actors engage in **continuous collaboration** to develop and produce innovative outputs and solutions.
4. **Institutionalisation**: phase in which innovative outputs are **adopted, implemented and integrated** into the ordinary functioning of the territory at community and institutional level.

Introduction: workshop guidelines

Workshop aim: going collectively through these 4 macro-phases and share our experiences on factors that shaped/would shape smart rural journeys

How

1. Participants, facilitators and note-takers divide among tables
2. Facilitator will guide the discussion through specific questions - prioritise the questions in order!
3. Participants take time to **reflect, note** your reflections in **sticky notes** (1 reflection, 1 sticky note!) and attach them to the large sheet on the table
4. Groups discuss and prioritise key points together, facilitators cluster the most representative sticky notes on the **flipchart** (during the subsequent recap of the discussion)
5. Participants and facilitator share with the rest of the tables the main insight of the discussion



Introduction: workshop guidelines

- Participants do not need to be necessarily involved in Smart initiatives – hints:
 - express your opinion(s) on an initiative/project that you know OR
 - think about your rural area (or one that you know well) and reflect on a potential smart initiative there
- Among the many experiences participants might have on smart initiatives, prioritise Smart Villages
- Allow everyone to share their experiences
- Time is limited: please share it among all participants!
- Have fun!

Introduction: Let's start

- Have a look to your tag
- Go to your tables: follow your color!

Room preparation: get ready

Round 1: anchoring and activation

2:35 – 2:50 – 15 mins

1. **Anchoring:** phase dealing with the identification of the scope of work and the dynamics of interaction and rooting of knowledge and resources within the territory. It includes the activation of the core group and the initial discussion and drafting of the strategy or project.
2. **Activation:** phase in which the enlarged core group defines the actors involved in the strategy or project and initiates interaction and collaboration to shape local innovation processes.

Prompt questions:

1. *How does the smart “journey” of a territory start? What are the most important **triggering factors**?*
2. *What does the **word ‘smart’ mean to you**, or what should it mean, when applied to rural areas? Refer to concrete examples if you have some?*

Quick feedback and transition

2:50 – 3:00 – 10 mins

- **Reflect** on 1 or 2 main insights emerging from the discussion
 - main triggering factors
 - main agreed “smart definitions” OR
- **Discuss** with your table and **share** with the plenary

Round 2: co-creation

3:00 – 3:15 – 15 mins

1. **Co-creation:** phase in which actors engage in continuous collaboration to develop and produce innovative outputs and solutions.

*What **factors, actors, dynamics** shape the **interactions/collaborations** during the co-creation activities of a smart initiative (e.g. smart village)?*

Prompt questions:

1. Which factors can **facilitate/hinder** the co-creation dynamics of a “smart village journey”?
2. Which **actors do play a role** in the rural (digital) innovation process/journey?
 1. Which actors might facilitate the process
 2. Which actors might hinder the process

Round 2: institutionalisation

3:15 – 3:30 – 15 mins

1. **Institutionalisation:** phase in which innovative outputs are adopted, implemented and integrated into the ordinary functioning of the territory at community and institutional level.

How “smart solutions” can be translated into smart territories?

Prompt questions:

1. *How to ensure the **implementation of innovative outputs** after the co-creative process, avoiding its abandonment?*
 1. *How to **integrate smart solutions** in local public/private mechanisms - e.g. services, local laws, processes:*
2. *What factors need to be considered to **embed smart outputs in the “villages”** everyday life?*

Cross-table guided discussion

3:30 – 3:50 – 15 mins

- Different interpretations of “smartness”
- Start-up processes and enabling conditions
- Co-creation dynamics
- Institutionalisation pathways

Wrap-up and conclusions

3:50 – 3:55 – 5 mins

Thank you!

Hold on, 15 mins more of your time, please!



Survey

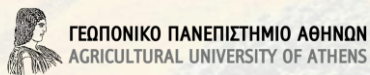
3:55 – 4:15



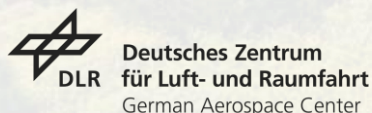


FUTURAL

Thank you!!



UNIVERSITÀ DI PISA





FUTURAL

Smart solutions “flash” presentations

Panos Petridis, *Alchemia*

Sonata Adomaviciute-Grabusove, *Betavia*

Ivan Arakistain, *TECNALIA*



Co-funded by
the European Union



FUTURAL

Online circular bioeconomy platform

Panos Petridis, *alchemia-nova*

Hosted by **JO
NOVA**

futural-project.eu



Circular Bioeconomy Platform

The Problem

Waste streams, an underutilized resource:

- Many rural areas have biomass streams (e.g. food waste) treated as waste with no clear pathways to turn them into value.
- Moreover, many buildings remain vacant and unused, while there is demand for places to work, meet, create and live.

Application - Target Users

- Co-designed with local stakeholders
- Targeted for: municipalities, regional authorities, vacant building owners
- Applied in Pongau (AT): focus on sewage sludge

Proposed Solution

A decision-support tool that illustrates the benefits of alternative resource valorization pathways:

- Map and visualize local material flows through Sankey diagrams
- Evaluate scenarios for their valorisation using Multi-Criteria Decision Analysis
- Education resource: Best practice factsheets
- Vacant Building repurposing guidelines & regional examples

Guided demo

<https://circular-bioeconomy.futural-project.eu/>



Co-funded by
the European Union



FUTURAL

Online crowdsensing platform for infrastructure health monitoring

Ivan Arakistain, *TECNALIA*

Hosted by 

futural-project.eu

BRIDGES2FUTURE

Resilience to Shocks:

Road infrastructures in many European rural areas face structural issues, natural disasters or climate change. A resilient transport system not only enhances safety and reduces disruptions but also supports economic stability.

Application - Target Users

- Co-designed with local stakeholders.
- Applied in Berriz (ES) and Kythira (GR).
- Targeted for: Municipality technicians, regional authorities.

Proposed Solution

An online crowdsensing platform for infrastructure health monitoring:

- A high usability android application (FUTURAPP) has been developed for low-cost accelerometer data acquisition.
- The solution has been deployed in Berriz bridge in Durangaldea and Diakofti bridge in Kythira.
- iSHM / SHM algorithms have been developed and deployed for the identification of anomalies in bridges.

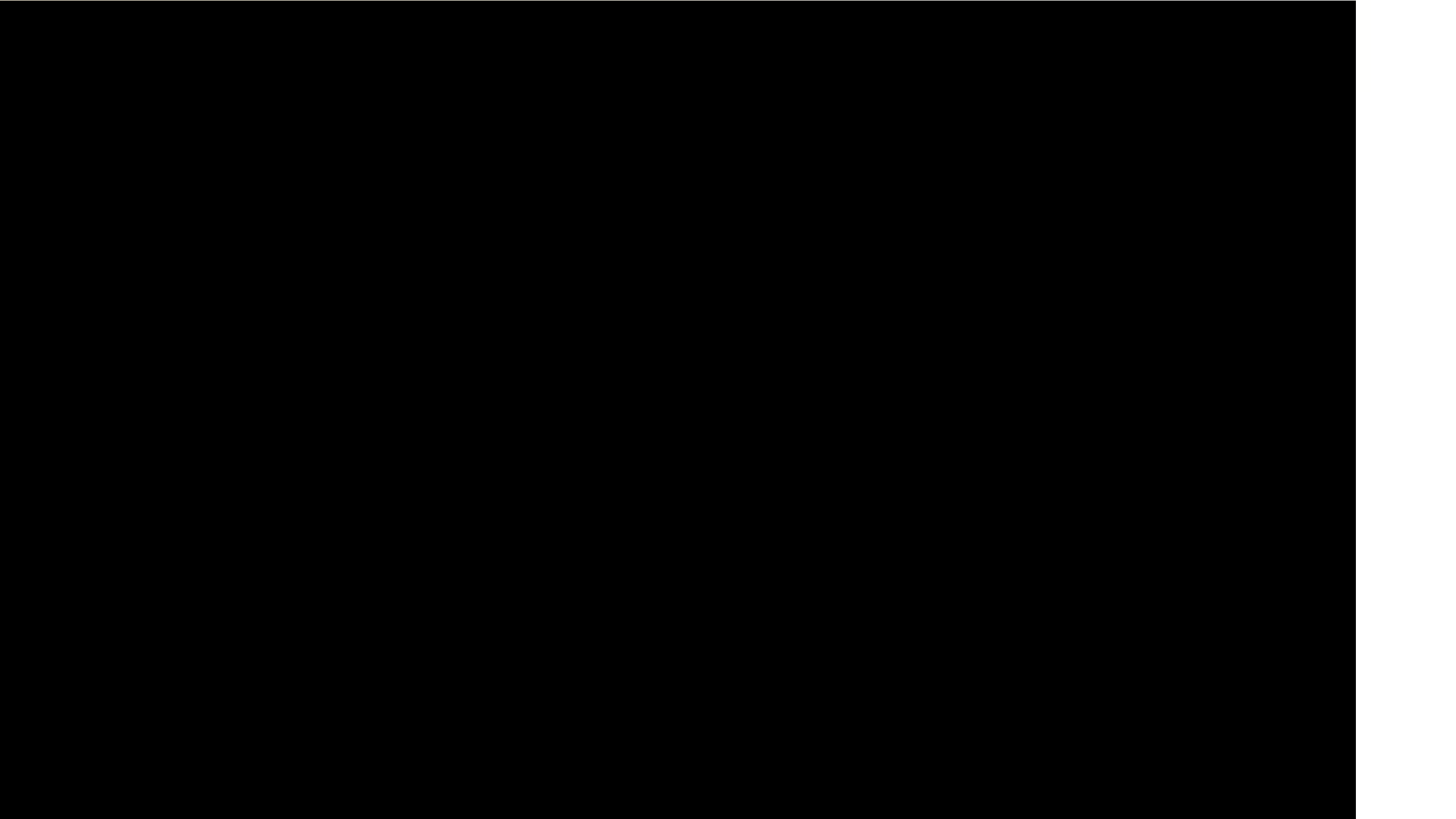
Guided demo

<https://shm.bridges.urban.tecnalia.dev/>

User: demouser1

Password: 1234

*Please ask for more demo user accounts if you need one.





Jonava, LT

Accessibility platform and quality of life desktop application

German Aerospace Center (DLR)
Remote Sensing Data Center
Georisks and Civil Security
Munich, Germany

Manuel Koeberl
Michael Wurm

futural-project.eu



Co-funded by the
European Union

Funded by the European Union. Views and opinions expressed are however those of the author(s) only and do not necessarily reflect those of the European Union or European Research Executive Agency. Neither the European Union nor the granting authority can be held responsible for them.



Accessibility Platform

The Challenge:

- Rural areas face population decline, aging demographics, and loss of infrastructure, making regional planning more complex and costly.

The Smart Solution:

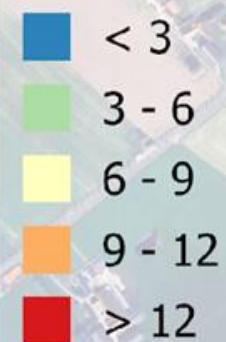
- Desktop application for municipalities to analyze accessibility to infrastructure and simulate planning scenarios
- Web platform to present and visualize results

The Target Groups:

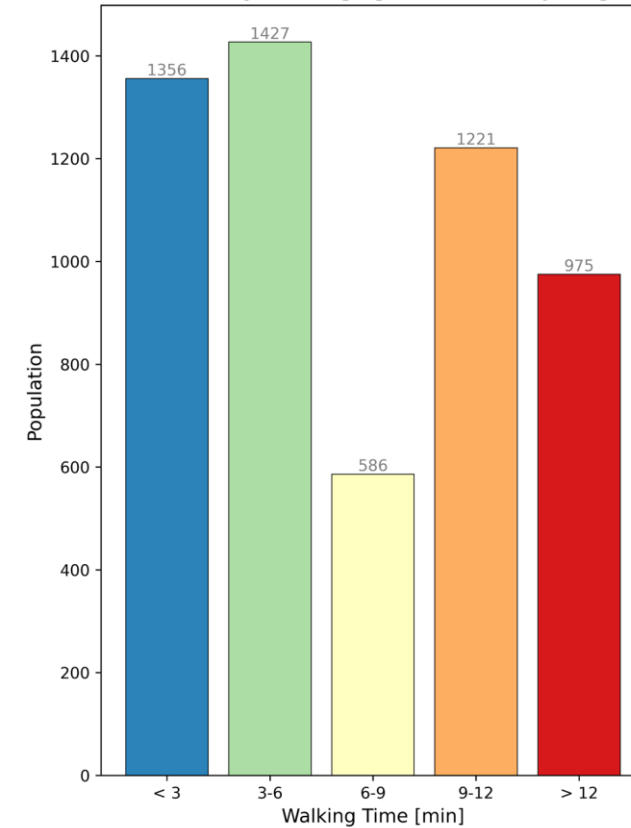
- Regional planners, municipalities, tourism, business owners, public transport operators, education and health sector, real estate sector

What is accessibility?

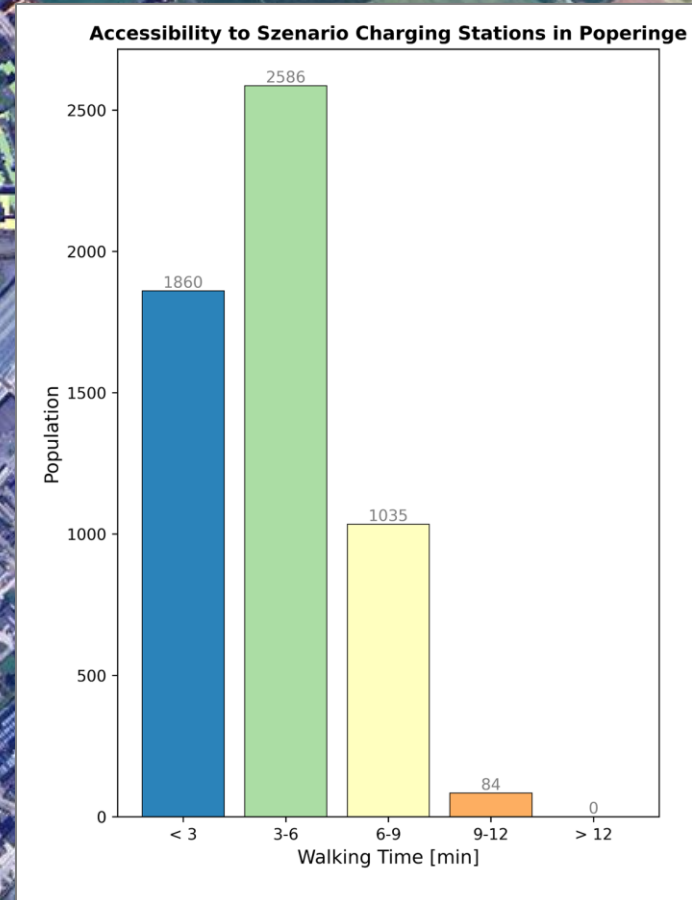
Walking Time [minutes]



Accessibility to Charging Stations in Poperinge



What is accessibility?





Select working path

Working Path

\\SmartSolution_Westhoek\Data

Light Mode

Thank you for using the FUTURAL Accessibility Smart Solution.

Before using the app, please ensure you have selected the correct working directory. The correct folder is named "Data", and it was provided along with the app package. The app will verify your selection and notify you if the wrong folder is chosen.

Once the correct folder is selected, the app will automatically scan its subfolders, detect available files, and populate most of the required inputs for you. You can still manually select different files if needed.

If you plan to work with your own data, make sure to copy your files into the appropriate subfolders within the "Data" folder structure. You can always copy your own files in the corresponding folders, but please never delete any folders from the folder "Data". We support ESRI Geodatabase (.gdb), Shapefiles (.shp) and Geopackage (.gpkg).

If you encounter any issues or need further assistance, please consult the User Guide, watch the Video Tutorials, or use the Help buttons located on the right side of the interface.

Street Network

Test Functionalities

Accessibility Catchment Area Difference Draw Area Merge Areas **Modify Amenities** Download Amenities Metadata

Create or import an Amenity file. Edit by adding or deleting markers. Export when done.

Import Amenity File

Mode: Add

Export Modified Amenities

Geodatabase

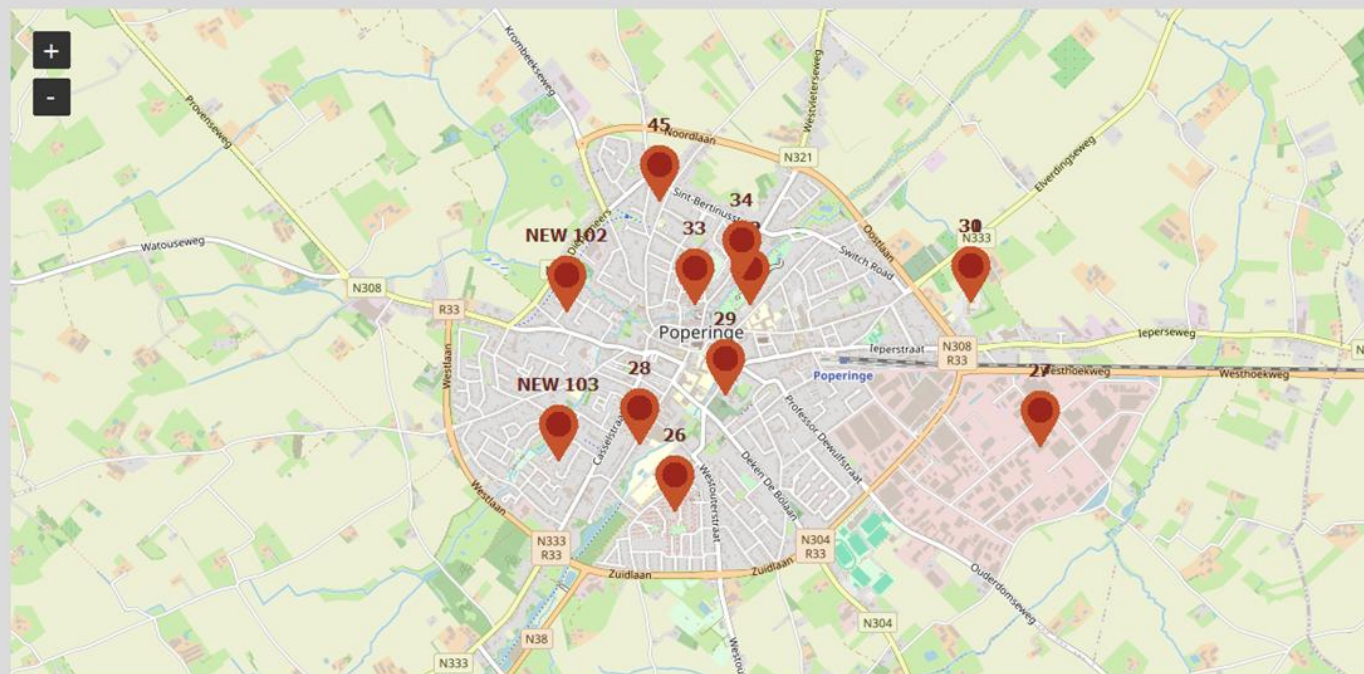
Help

Delete Amenity by ID:

Delete by ID

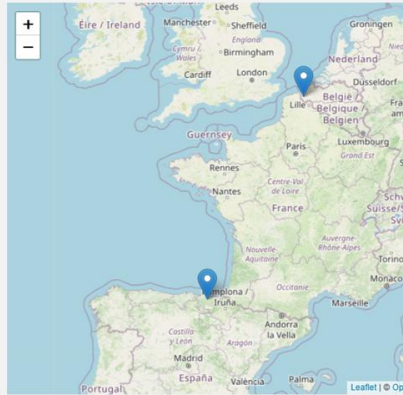
Delete All

Total POIs: 103



Welcome to the Quality of Life Platform

Quality of Life Smart Solution focuses on improving spatial planning to enhance accessibility of rural areas. Our platform provides detailed analyses and tools for Durangaldea, Spain, and Westhoek, Belgium, showcasing our commitment to accessible rural development.



Accessibility Analysis

Explore the accessibility of various amenities in Durangaldea and Westhoek areas using different transportation modes. Filter the analysis based on your specific needs.

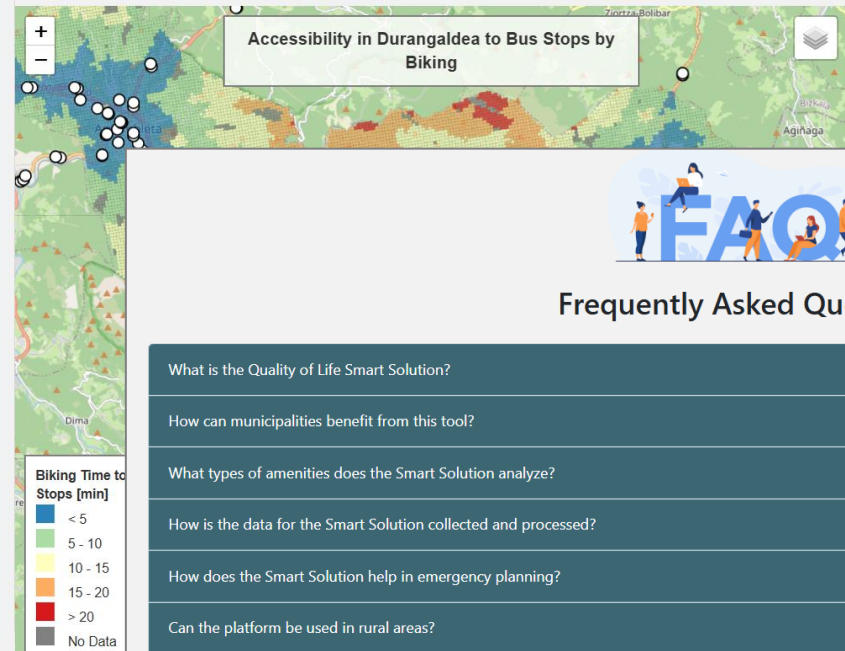
Select Area

Select Amenity

Select Transportation Mode

[Send Accessibility Suggestions](#)

Map of Bus Stops in Durangaldea by Bike



Frequently Asked Questions

- What is the Quality of Life Smart Solution? ▼
- How can municipalities benefit from this tool? ▼
- What types of amenities does the Smart Solution analyze? ▼
- How is the data for the Smart Solution collected and processed? ▼
- How does the Smart Solution help in emergency planning? ▼
- Can the platform be used in rural areas? ▼
- How can policymakers and stakeholders use the Smart Solution? ▼
- Is the platform user-friendly for non-experts? ▼
- How do I interpret the maps? ▼
- How is accessibility calculated? ▼



FUTURAL

Tools for Smart Villages and other rural innovators

Dan-Matei Popovici, *POLITEHNICA Bucharest*

Elena Viani, *Acta*



Co-funded by
the European Union



FUTURAL

FUTURAL Metasearch Platform

Tools for Smart Villages and other rural innovators

Matei Popovici, *POLITEHNICA Bucharest*

Hosted by **JO
N
VA**

futural-project.eu

175 B parameters

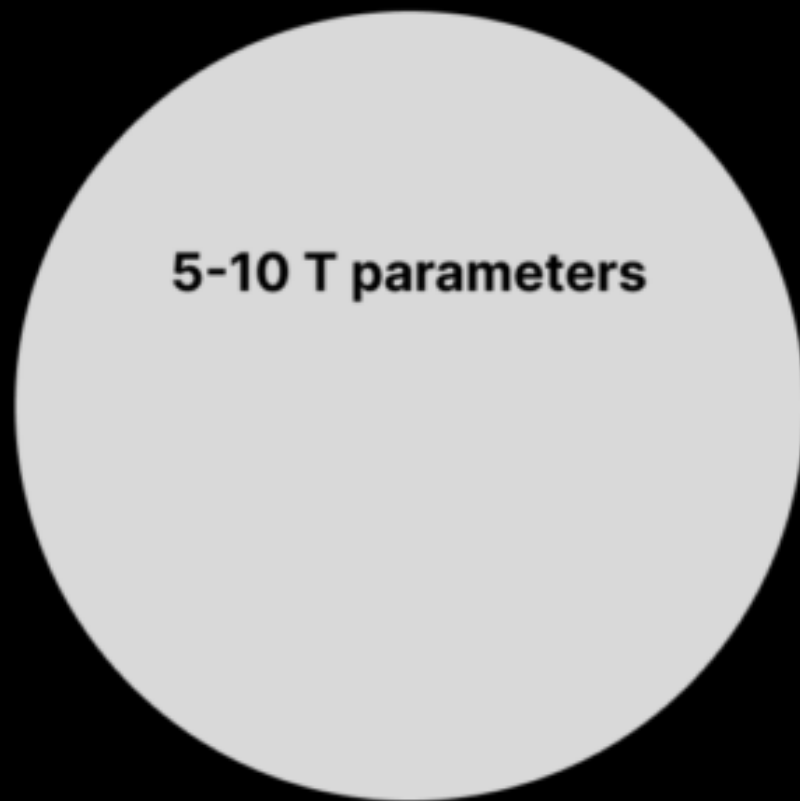


GPT-3
2020

1.76 T parameters



GPT-4
2023



5-10 T parameters

GPT-5
2025



A photograph of a person standing in a field with trees in the background. The person is wearing a green shirt and dark pants. The field is a mix of green grass and dry, yellowish-brown patches. The trees are dense and green, with some branches in the foreground. The sky is blue with some clouds.

Long-term forecasts

Climate change

Fluctuating food production

Pollution

Permaculture



FUTURAL



1 Circular Bioeconomy, Biodiversity & Ecosystem Management

Online circular bioeconomy platform
ICCS / ART21 / Alchemia

Digital assessment tool:
“Biodiversity Score”
Alchemia / ICCS



2 Climate Adaptation & Mitigation

Online platform for delivery of hydrological models
IHE-DELFT / ICCS



3 Resilience to Shocks

Online Crowdsensing Platform for infrastructure health monitoring
Tecnalia / ICCS



4 Citizen Engagement and Quality of Life

Online platform for rural citizen engagement in eGovernment plans & policy co-creation
Lisbon Council

Online platform to assess accessibility to health & social services, and infrastructures.

DLR



5 Lifelong Education & Training

Online platform delivering open courses
AUA



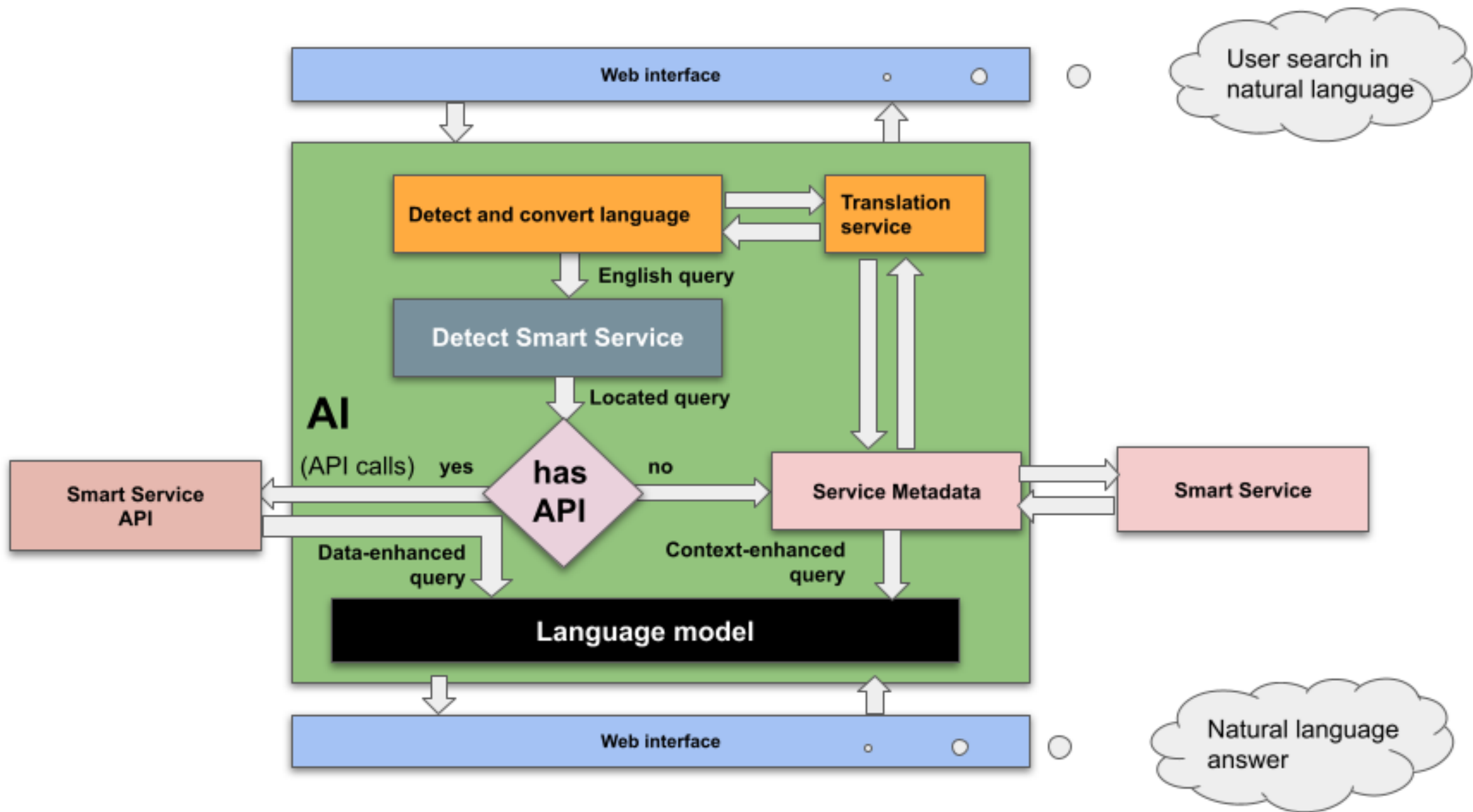
blackbox

**Closed-source
(subscription-based)**



transparent

**Self-contained
architecture**



demo



FUTURAL

METASEARCH Platform

Type a question or a few words



e.g. nearest hospital from Durango, I am interested in hydrology data, Turdus pilaris ever been spotted in Cluj?

Ask

FUTURAL Smart Services

Wildlife Sighting and Tracking Platform

An interactive platform for reporting and tracking wildlife sightings to support biodiversity monitoring.



Durangaidea Local Services & Quality of Life

A local information hub for navigating essential services like pharmacies and hospitals in the Durangaidea region.



Weather Cultivation & Crops Advisor



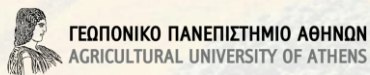
Online Circular Bioeconomy Platform



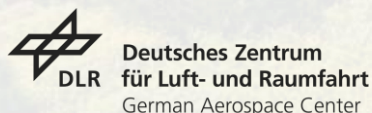


FUTURAL

Thank you!



UNIVERSITÀ DI PISA





FUTURAL

Smart solutions “flash” presentations

Manuel Koberl, *DLR*

Cristiane Fragata Dos Santos, *IHE Delft*



Co-funded by
the European Union



FUTURAL

Online platform for model-based assessment of adaptation strategies

Cristiane Fragata Dos Santos, *IHE Delft*

Hosted by **JO
N
VA**

futural-project.eu

Climate Adaptation Smart Solution

1

The challenge

Climate adaptation for hydrological extremes (e.g., floods and/or drought)

2

The Smart Solution

Online platform to explore a model-based assessment of adaptation strategies

3

Target groups

Birda (RO)

Westhoek (BE)

Province/Municipality, farming communities, water authorities, emergency services

4

Outcomes & Impact

- Evaluation of potential locations for implementation of strategies
- Explore the effects of adaptation strategies on the water system
- Inclusive decision-making process

Guided demo

<https://climate-adaptation.futural-project.eu/>



FUTURAL

Stocktaking from the day

Ari Lomis, Agricultural University of Athens, FUTURAL Coordinator

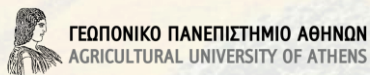
Agenda for tomorrow

Time	Session	Presenter
9.15 am	Enabling smart rural futures: capacities, conditions and contexts To explore the competences, enabling conditions, barriers and interpretations needed to implement Smart Villages across different contexts	Capacity building workshop Carlo Giua and Brigida Marovelli , <i>UNIFI</i> .
10.45 am	Tea & Coffee Break	
11.15 am	Sustainable business models for rural innovation	Business models validation workshop Pantelis Kanellopoulos , Natasa Koufaki and Giannis Fyrogennis , <i>REFRAME.FOOD</i>
12.15 am	How can policies integrate Smart Villages in the future? Governance frameworks for smart rural communities	Debate with panel. Panellists: Mindaugas Maciulevičius , <i>Lithuanian Rural Innovation Network</i> Juha-Matti Markkola , <i>Network Expert Rural Network Support Unit of Finland, Finnish Food Authority</i> Aiva Apša-Ķīšeniece , <i>Latvian Rural Forum, Sustainability and Resilience Specialist</i> Moderation: María Alonso-Roldán , <i>AEIDL</i>
1.00 pm	Conclusion and next steps	Ari Lomis , <i>FUTURAL Project Manager, Agricultural University of Athens</i>
1.00 pm	Lunch Break	



FUTURAL

End of Day 1! Thank you!
Tomorrow we start at **9.00 AM**
Registrations open at: **8.30 AM**



UNIVERSITÀ DI PISA



KYTHERIAN FOUNDATION FOR CULTURE & DEVELOPMENT

